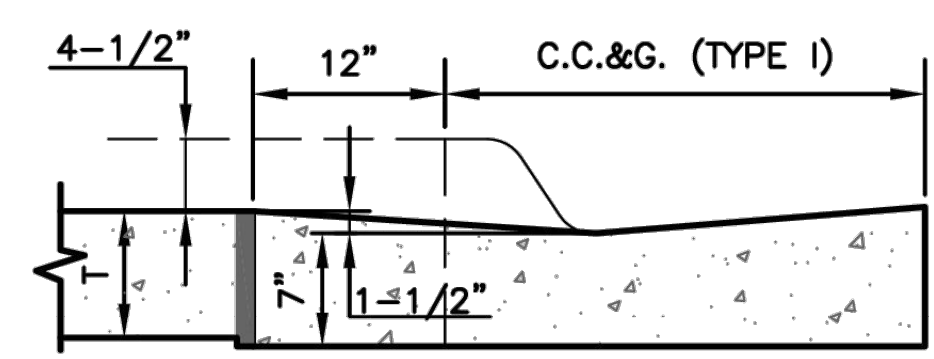
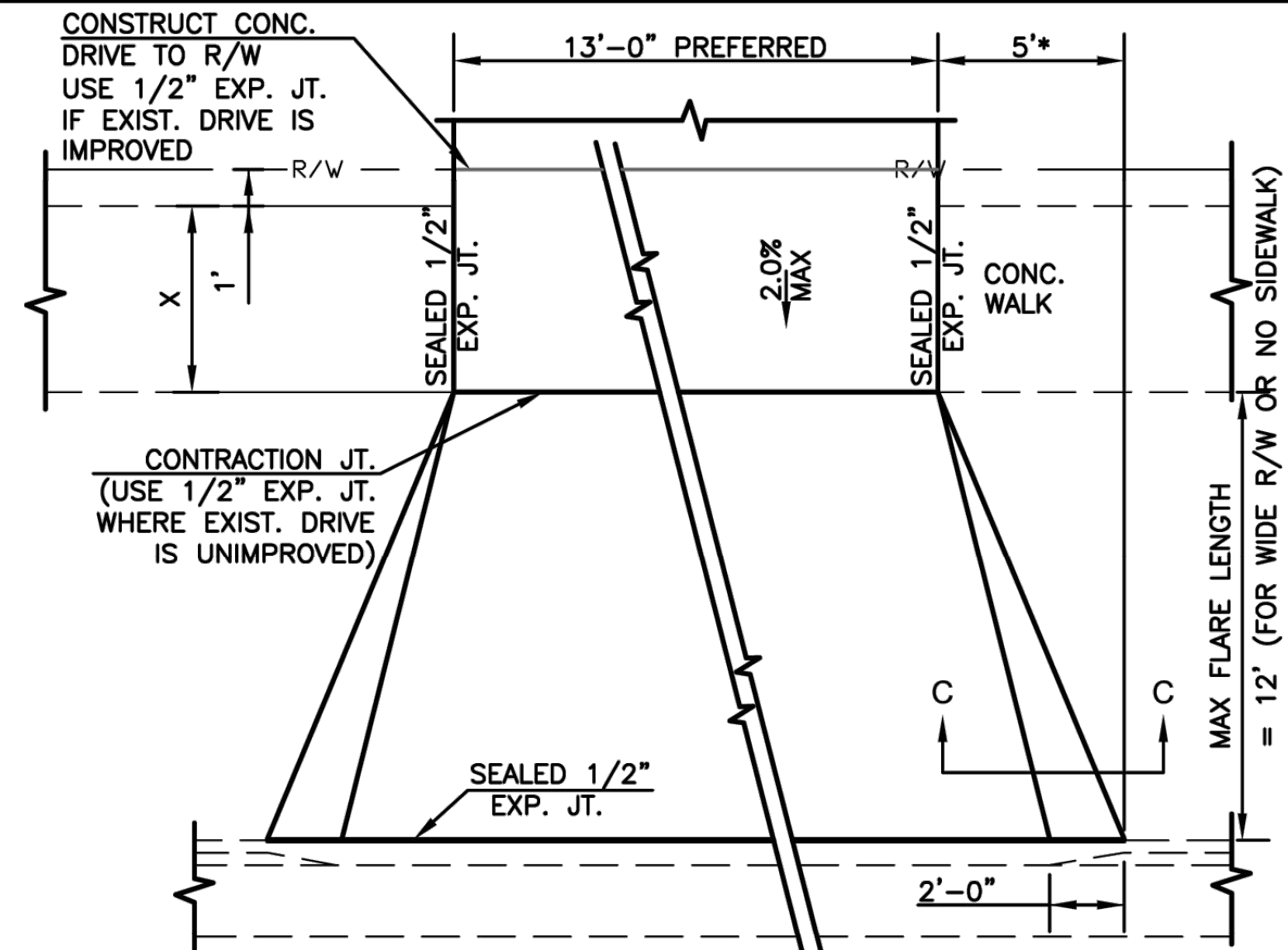


COMMERCIAL DRIVE APPROACH

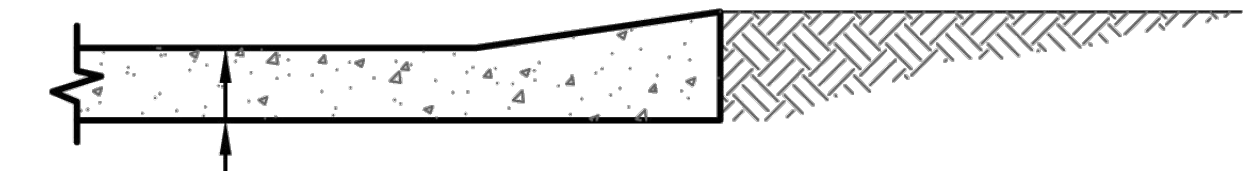


SECTION A-A
T=8" NON-REINFORCED FOR COMMERCIAL DRIVE, ALLEY APPROACH, AND SIDEWALK IN DRIVE ENTRANCE.

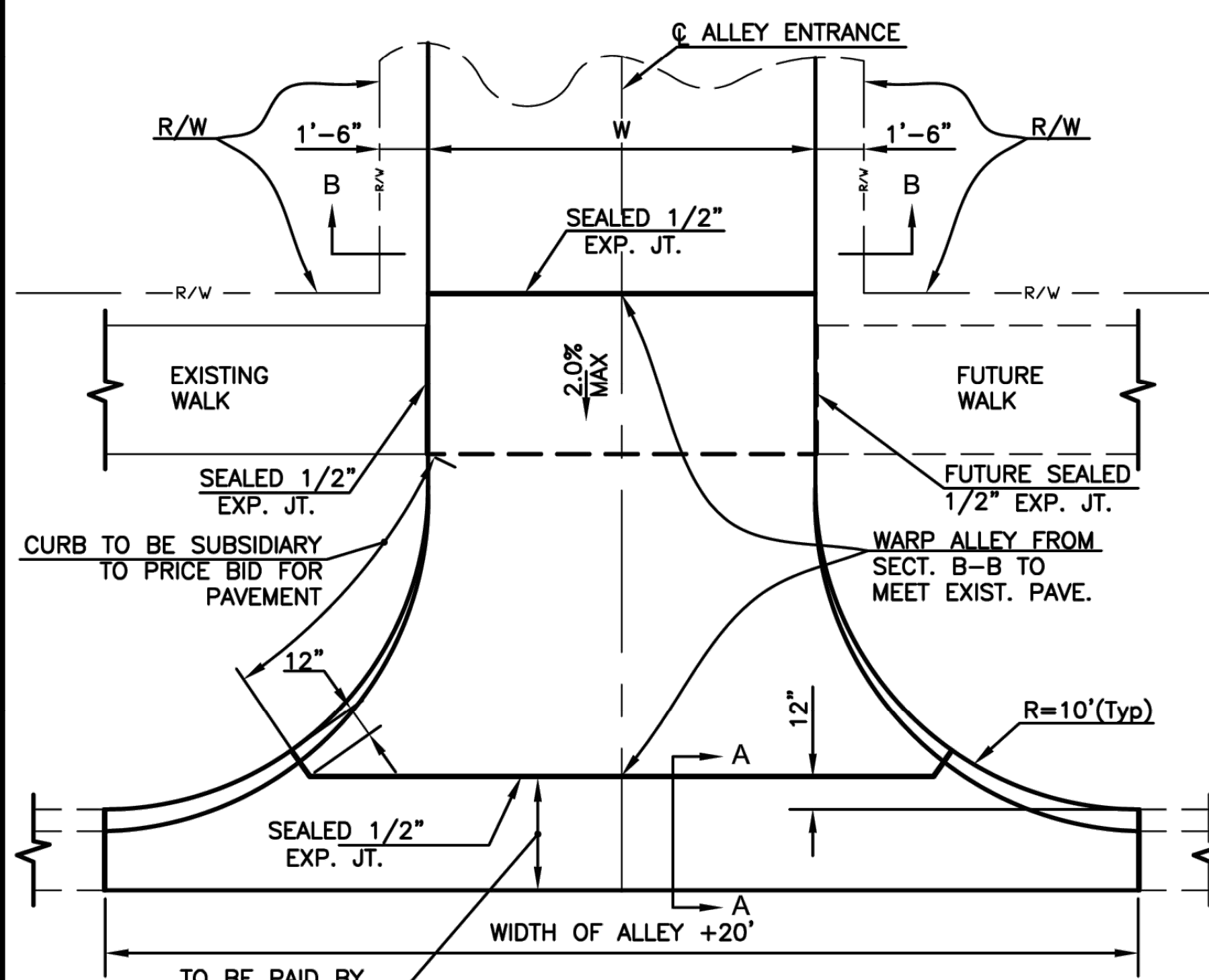


TYPICAL PRIVATE DRIVE APPROACH

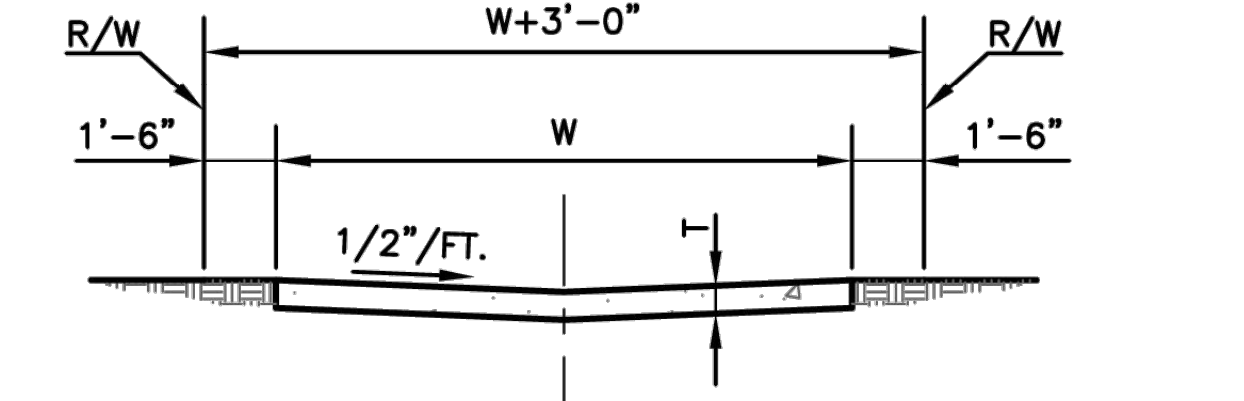
CONSTRUCT CONC. DRIVE TO R/W USE 1/2" EXP. JT. IF EXIST. DRIVE IS IMPROVED
CONTRACTION JT. (USE 1/2" EXP. JT. WHERE EXIST. DRIVE IS UNIMPROVED)
SEAL 1/2" EXP. JT.
SEAL 1/2" EXP. JT.
CONC. WALK
SEAL 1/2" EXP. JT.
MAX FLARE LENGTH = 12' (FOR WIDE R/W OR NO SIDEWALK)
"X" = 5'-0" ON PRINCIPAL ARTERIAL, MINOR ARTERIALS AND COLLECTORS
"X" = 4'-0" ON SUB-COLLECTORS AND LOCALS



SECTION C-C
T1=6" FOR RESIDENTIAL DRIVE APPROACH AND SIDEWALK IN DRIVE ENTRANCE

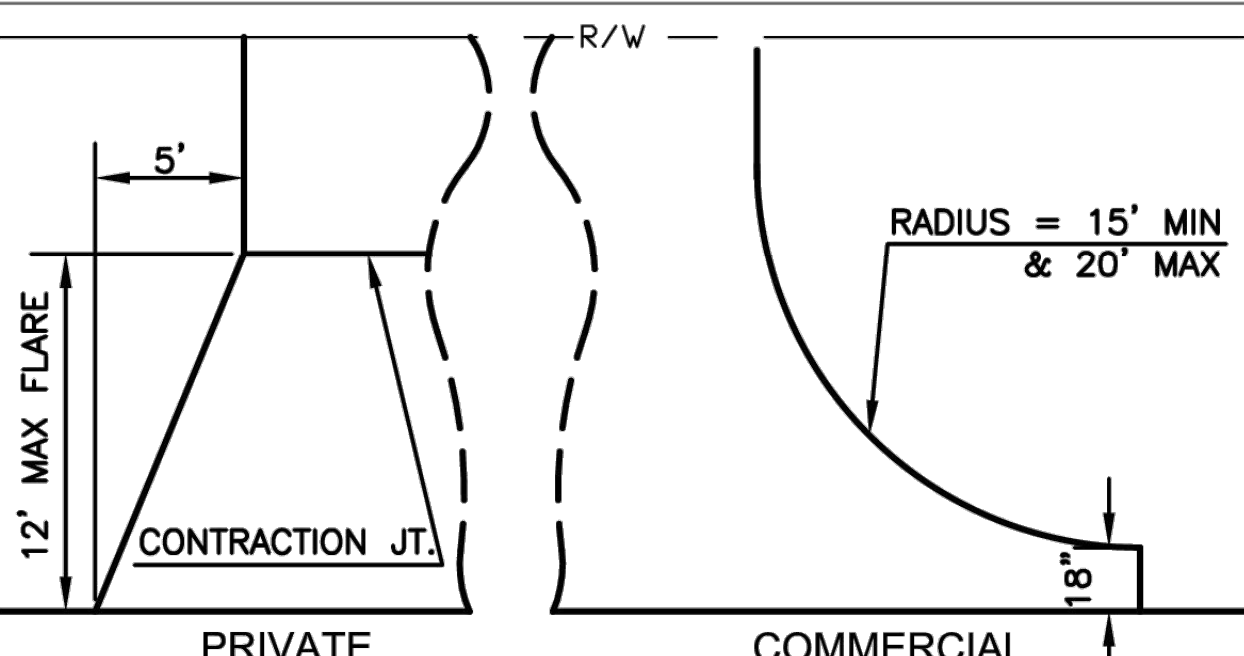


ALLEY APPROACH

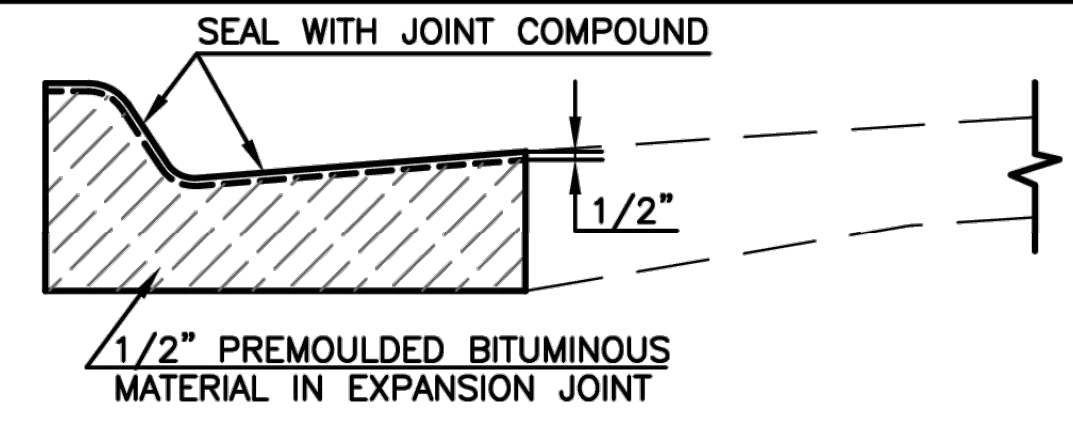


SECTION B-B

NOTES:
1. T=7" REINFORCED CONCRETE
2. WIDTH OF W WILL BE USED THROUGHOUT ON ALL ALLEY PAVING PROJECTS.
3. ALLEY RETURNS SHALL BE THE SAME THICKNESS AS THE ADJACENT STREET THICKNESS.
4. 1/2" EXP. JOINT AT EACH END OF ALLEY RETURN.

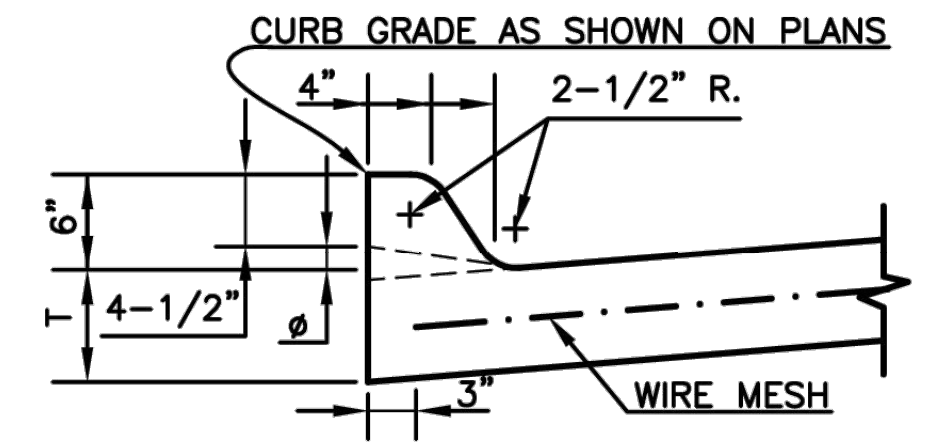


PRIVATE DRIVE APPROACHES ON AN UNIMPROVED ROADWAY

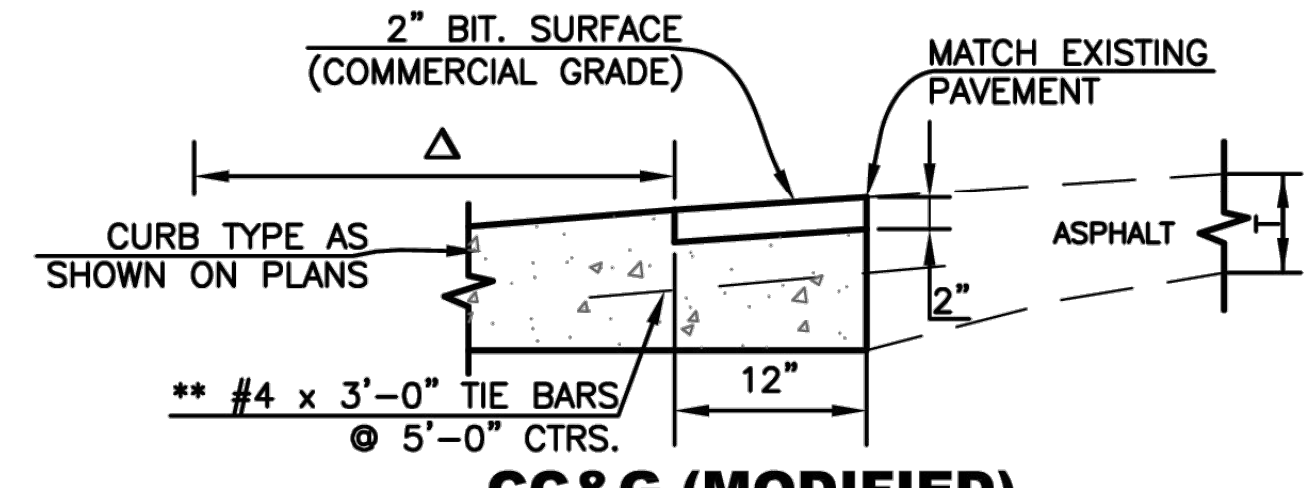


CURB AND GUTTER EXPANSION JOINT DETAILS

NOTES:
1. 1/2" EXPANSION JOINTS TO BE PLACED AT THE END OF ALL INTERSECTION RETURNS.
2. SAND IS NOT AN APPROVED FILL OR SUBGRADE MATERIAL.
3. ALL EXPANSION JOINTS SHALL BE SEALED WITH APPROVED MATERIAL.

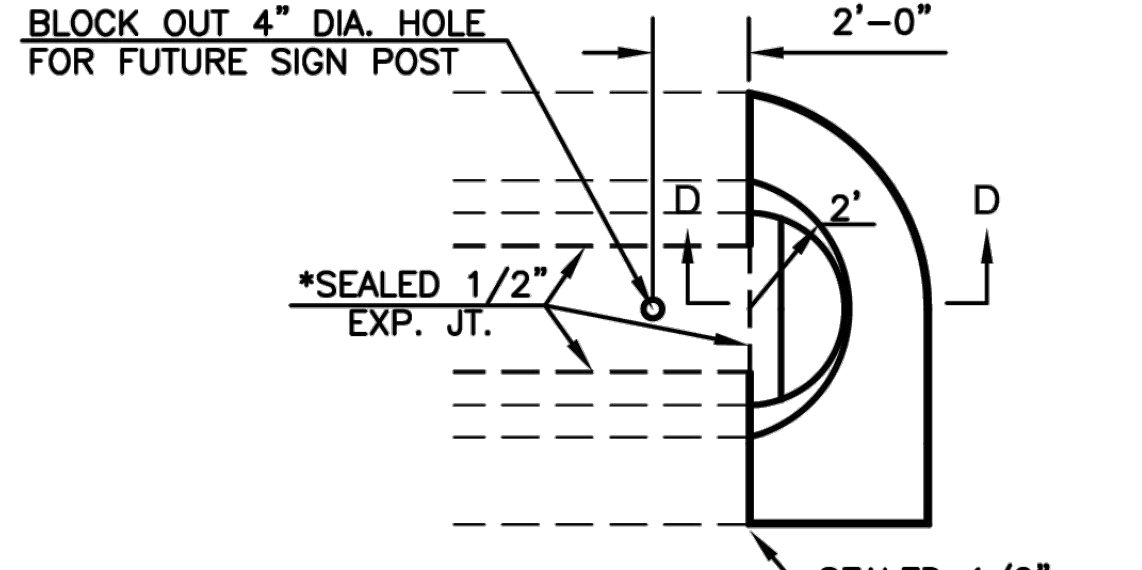


6" INTEGRAL CURB

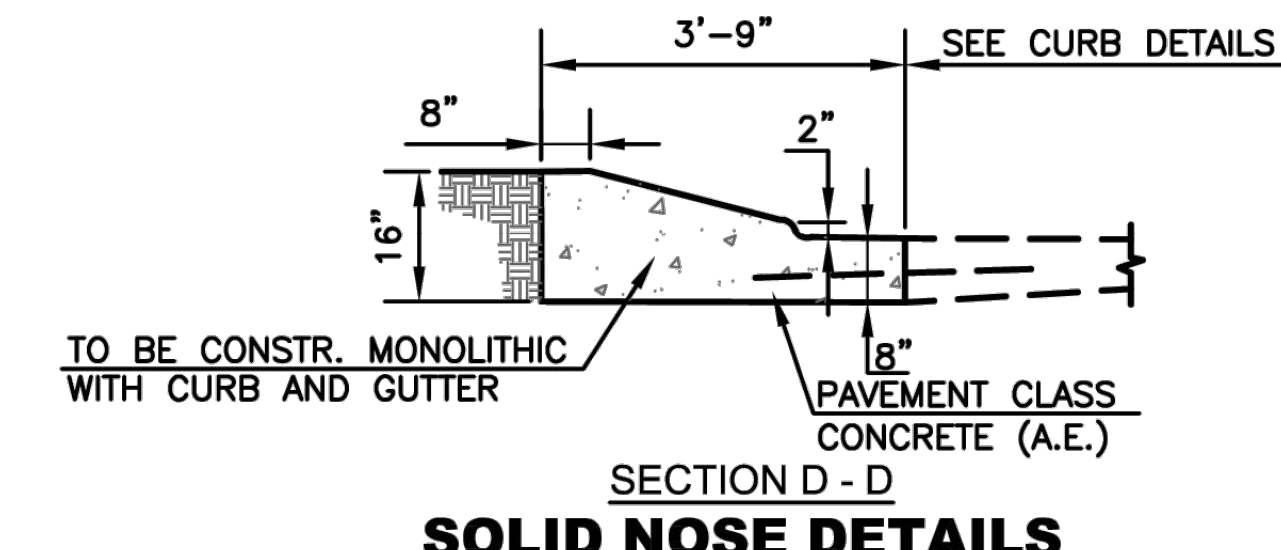


CC&G (MODIFIED)

NOTE:
CURB AND GUTTER ABUTTING EXISTING ASPHALT
Δ DIMENSION IS FROM BACK OF CURB TO TOE, SEE APPROPRIATE DETAIL FOR CURB TYPE AS SHOWN ON PLANS

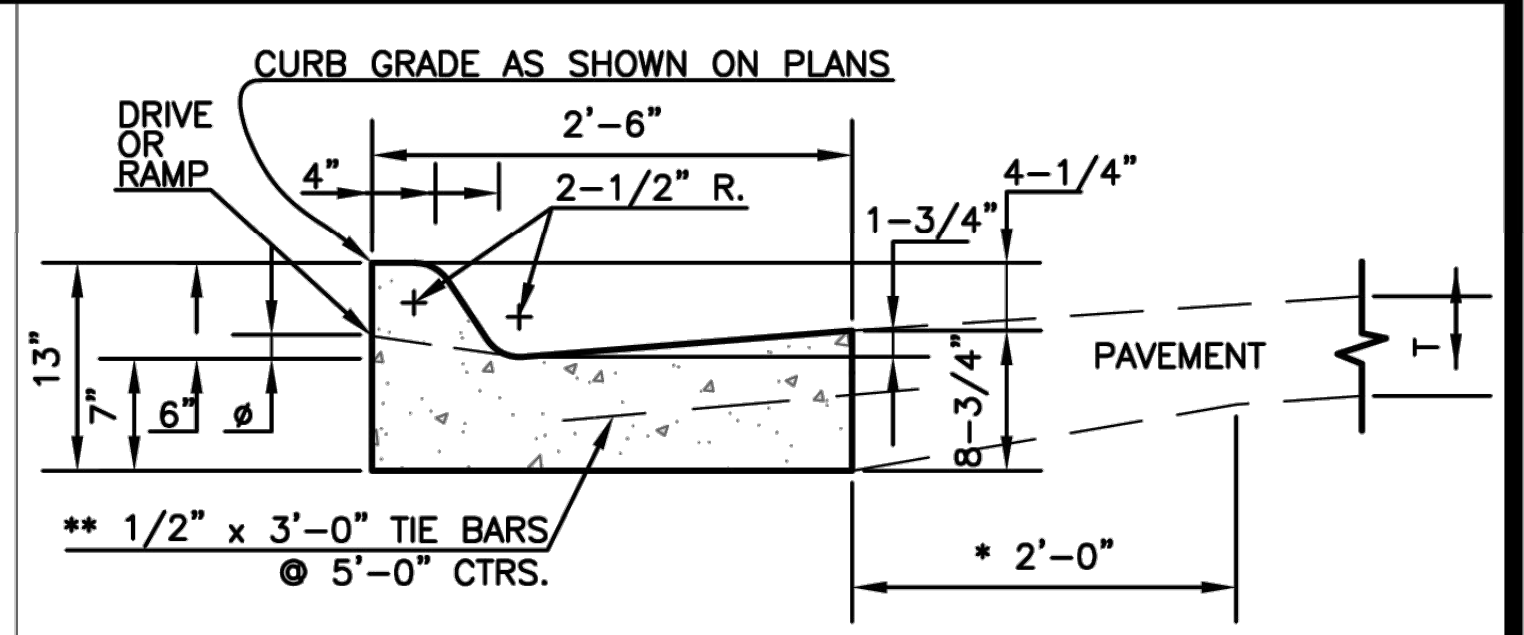


PLAN

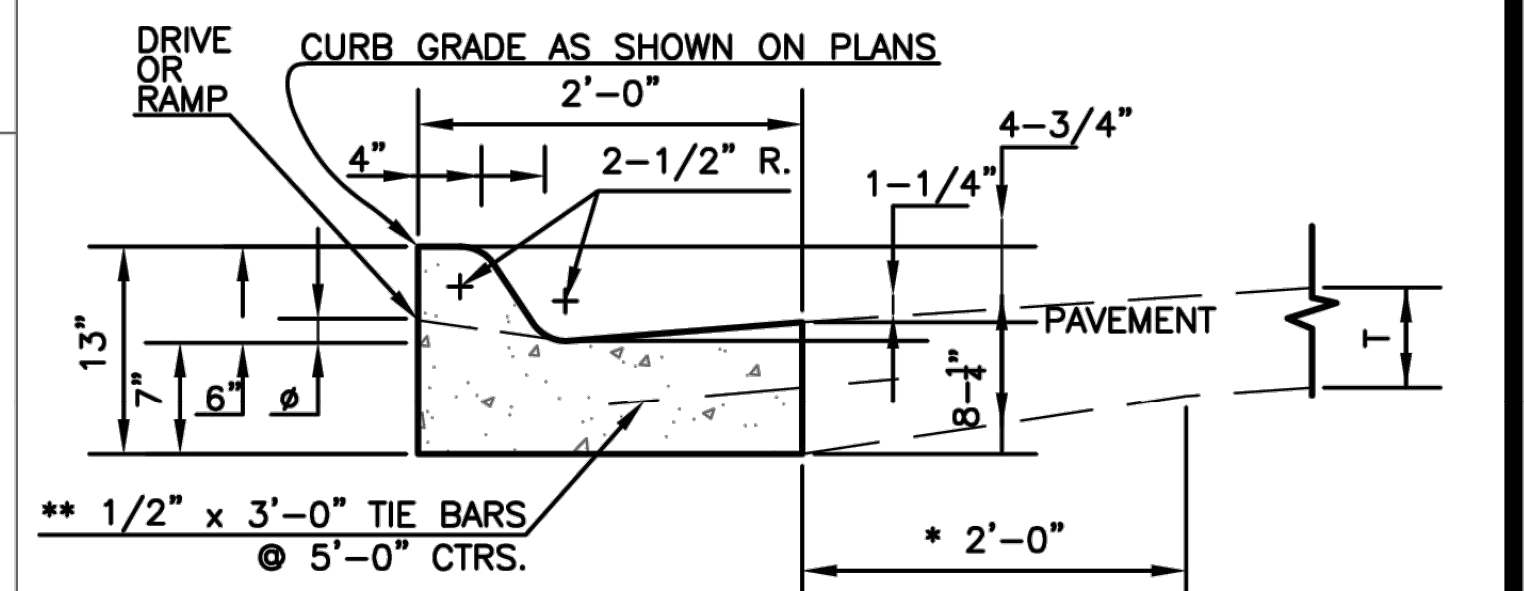


SOLID NOSE DETAILS

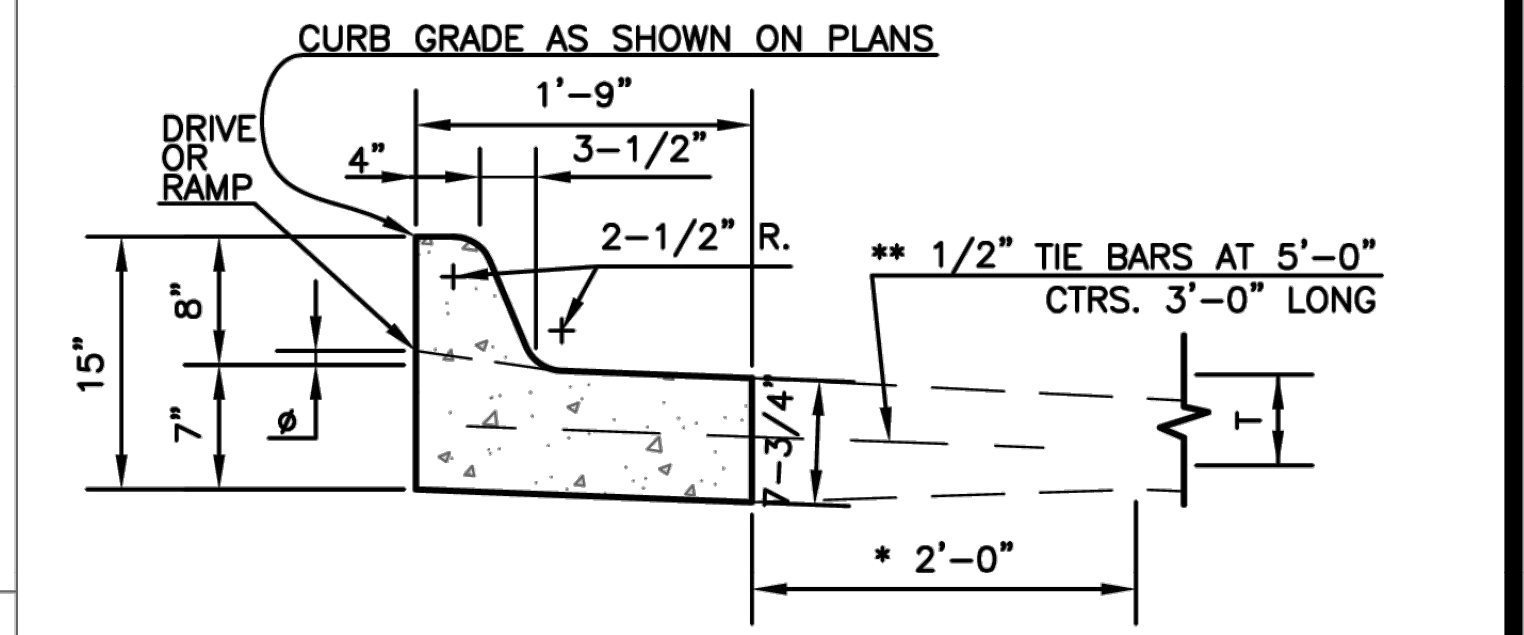
NOTE:
PAVEMENT CLASS CONCRETE (AE) NEEDED TO COMPLETE THE MEDIAN NOSE SHALL BE SUBSIDIARY TO THE BID ITEM FOR COMBINED CURB AND GUTTER TYPE III.
* OMIT SEALED 1/2" EXPANSION JOINT WHEN SURFACE MATERIAL USED IN MEDIAN IS OTHER THAN CONCRETE.



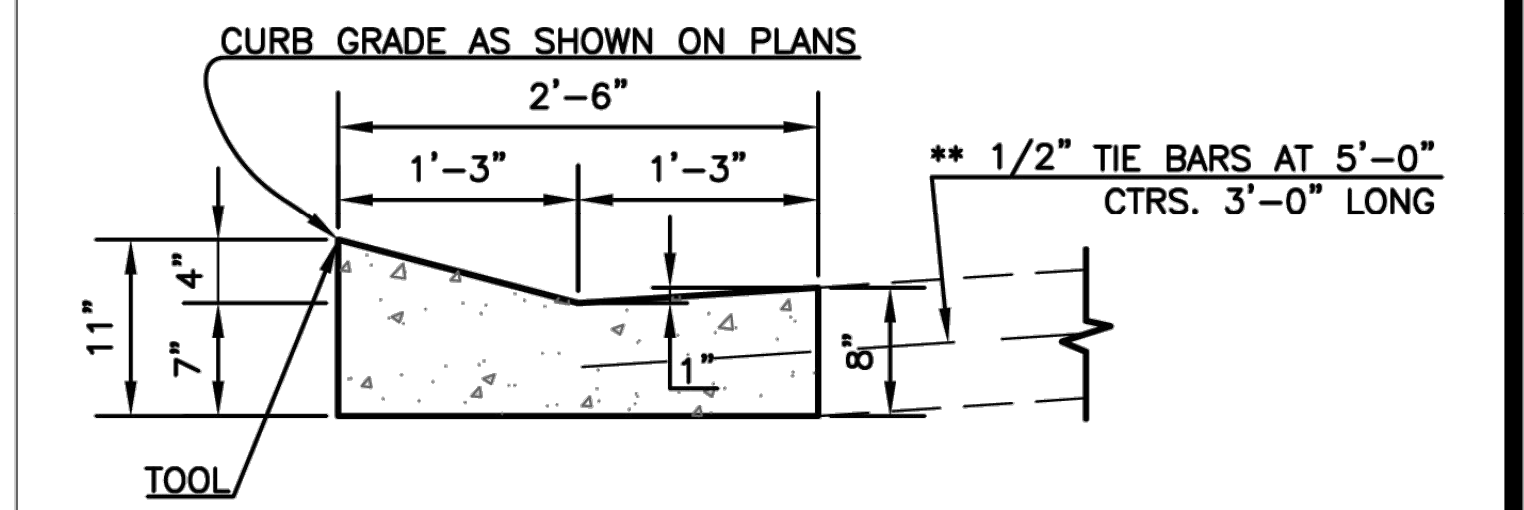
COMBINED CURB & GUTTER-TYPE I



COMBINED CURB & GUTTER-TYPE II



COMBINED CURB & GUTTER-TYPE III



LAYBACK CURB & GUTTER-TYPE IV

NOTES:
1. USE OF LAYBACK CURB AND GUTTER IS RESTRICTED TO STREET CLASSIFICATION OF SUB-COLLECTOR AND LOCAL. LAYBACK CURB AND GUTTER SHALL NOT BE USED IN INTERSECTION CURB RETURNS.
2. FOR CURB AND GUTTER ABUTTING EXISTING ASPHALT, REFER TO CC&G MODIFIED DETAIL.

* THE CONTRACTOR HAS THE OPTION OF MAINTAINING OR TRANSITIONING AS SHOWN AT NO ADDITIONAL COST.

**THE TIE BARS MAY BE ELIMINATED WITH ASPHALTIC CONCRETE PAVEMENT CONSTRUCTION.

Ø 1-1/2" FOR DRIVE ENTRANCES AND 3/4" FOR SIDEWALK RAMP

5	March 2013	C&G payment @ alley appr. & bars to	DHS	SB
4	Dec. 2012	Changed to tie bar from rebar	DHS	SB
3	March 2010	Eliminated keyed jt. at Com. Drive Appr.	DHS	SB
2	Dec. 2009	Added Dr. Appr. on Unimpr. Rdwy., added flare verbage, mod. S/W x-slope & remv. keyed joints from C & G.	DHS	SB
1	Feb. 2008	Mod. Com. Dr. & Alley Appr.	DHS	SB
NO.	DATE:	REVISION	BY:	APP'D

DRAWN BY: rm/mc
APP'D BY: R. Christy King



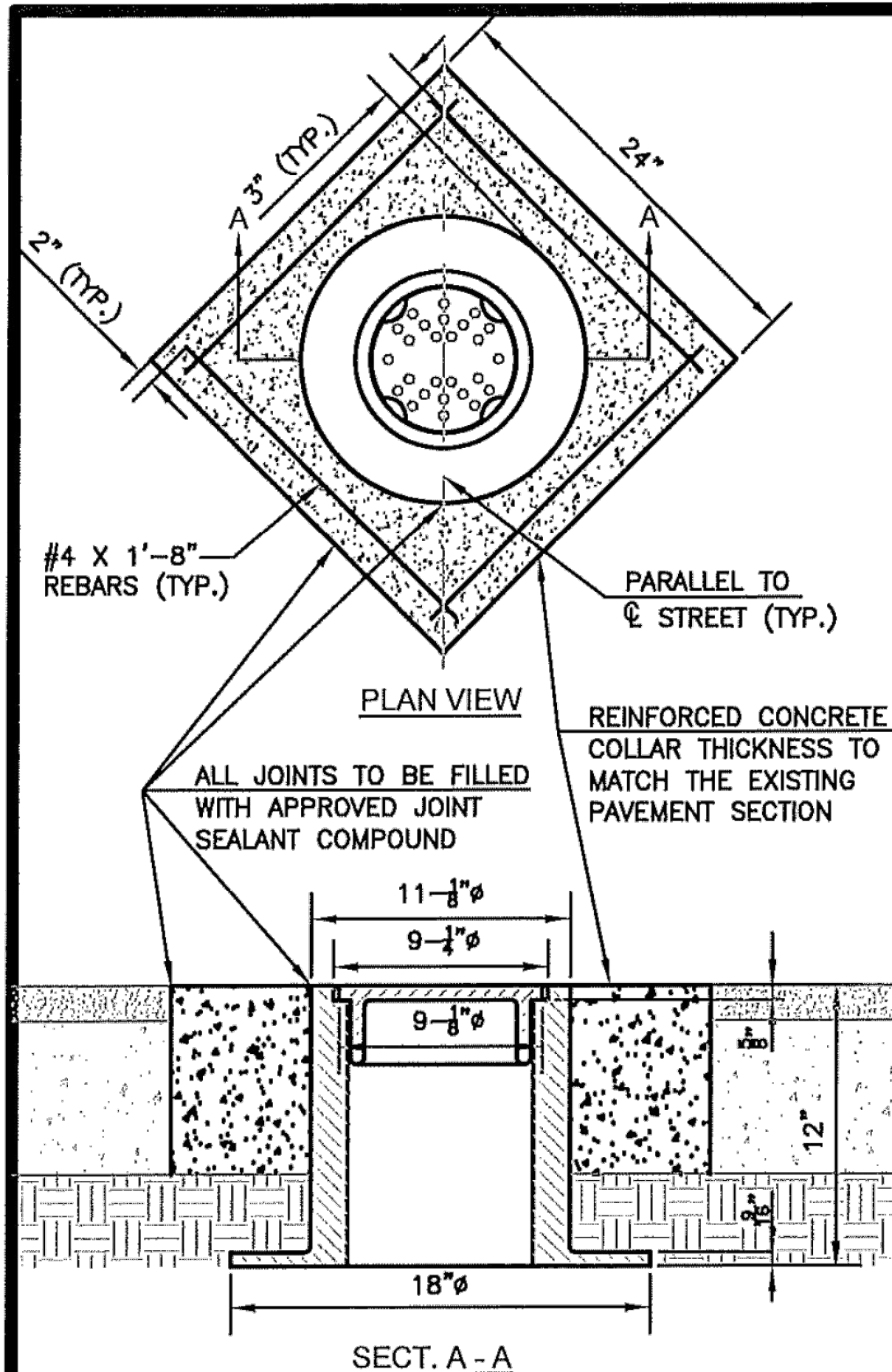
SHAWNEE COUNTY, KANSAS
PUBLIC WORKS DEPARTMENT
1515 NW SALINE
TOPEKA, KS 66618
(785) 233-7702



STANDARD DETAILS

CURB & GUTTER AND APPROACH DETAILS
(DT-003)

DATE: FEB 2026
SHEET: 20 OF 59
PROJ.: 841106.02

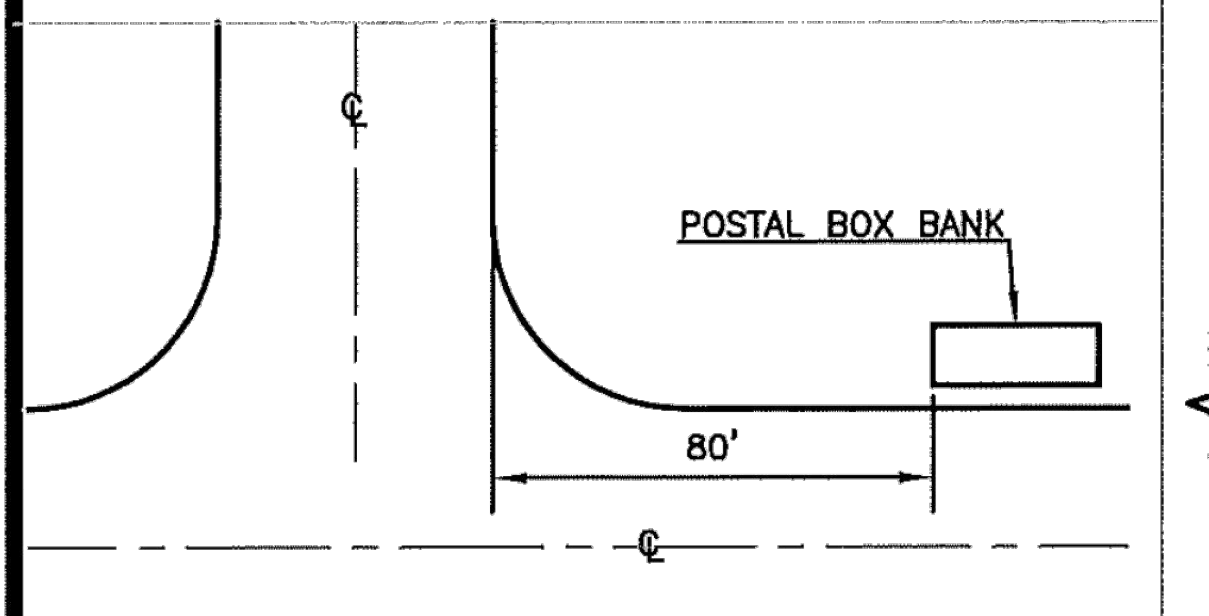


PLAN VIEW
 ALL JOINTS TO BE FILLED WITH APPROVED JOINT SEALANT COMPOUND
 REINFORCED CONCRETE COLLAR THICKNESS TO MATCH THE EXISTING PAVEMENT SECTION

SECT. A - A

NOTES:
 1. THE TOP OF THE MONUMENTATION WITHIN THE MONUMENT BOX WILL BE BELOW THE BOTTOM OF THE MONUMENT BOX AND PAVEMENT ELEVATION TO ACCOMMODATE FREE PAVEMENT MOVEMENT WITHOUT DISPLACEMENT OF THE MONUMENT. ALL MONUMENTS IN CONCRETE WILL BE PLACED IN SUCH A WAY THAT THE TOP OF CONCRETE IS A MINIMUM OF 3" CLEAR OF THE BOTTOM OF THE MONUMENT BOX AND PAVEMENT, TO ALLOW DRAINAGE PERCOLATION OF SURFACE SEEPAGE AWAY FROM THE BOX.
 2. ALTERNATE INSTALLATION: 24" DIAMETER CORE DRILL CENTERED AROUND THE MONUMENT WITH #4 REBAR HOOPS MAINTAINING A 3" CLEARANCE FROM MONUMENT AND EDGE OF CONCRETE COLLAR.
 3. CLAY AND BAILEY MFG. CO. COVER NO. 02193-01-1052 RING NO. 02193-01-2050 COMBINED WEIGHT 95 LBS.

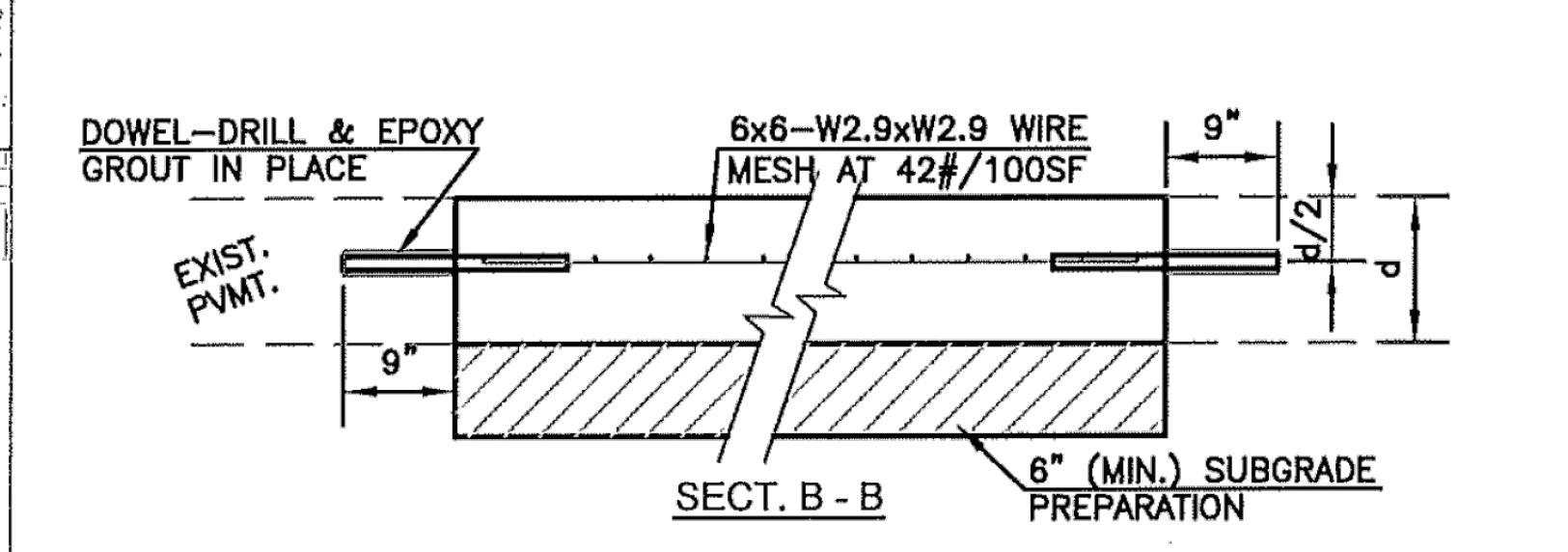
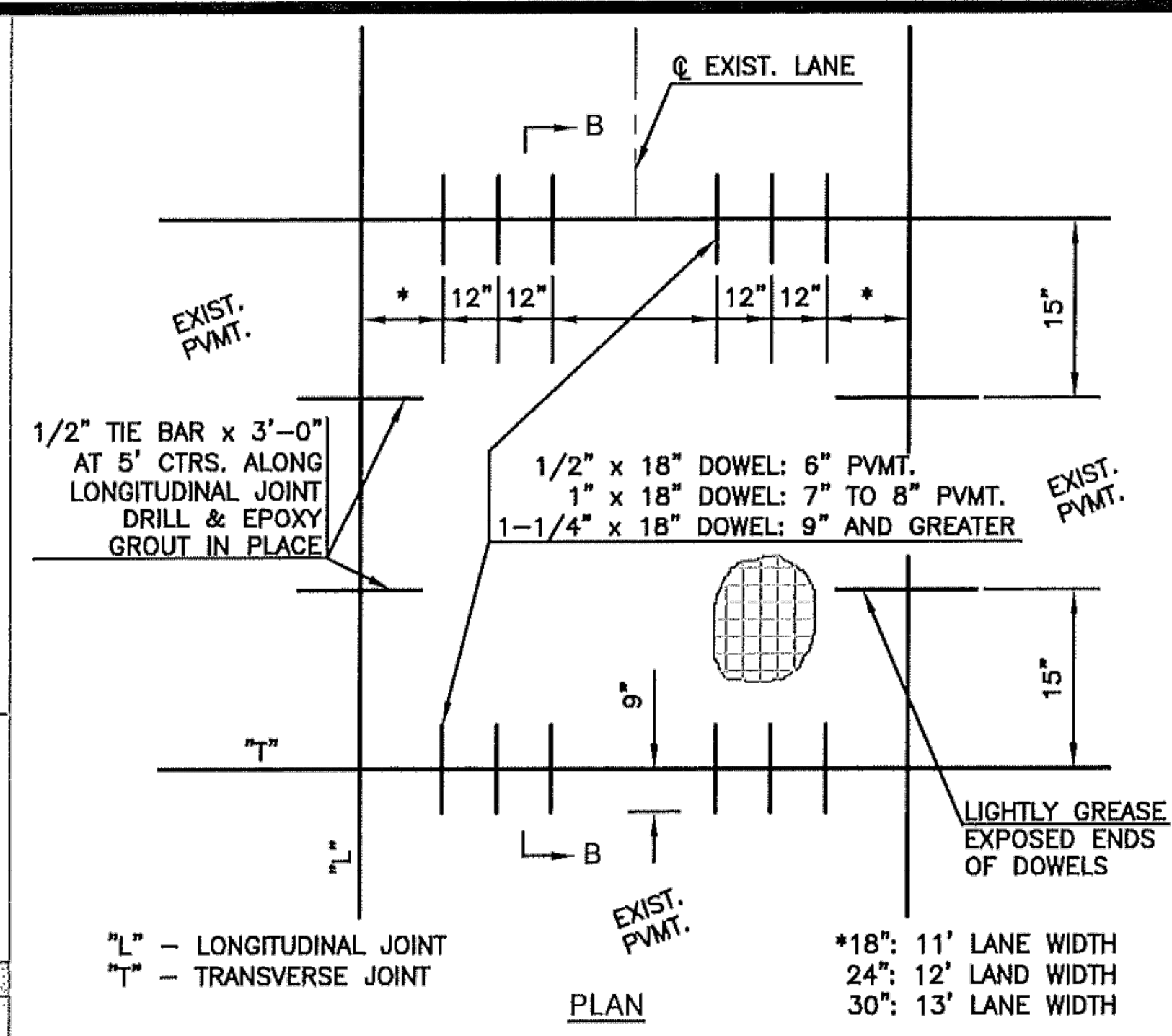
CAST IRON MONUMENT BOX



NOTE:
 WHERE BANKS OR GROUPS OF POSTAL BANKS ARE TO BE INSTALLED, THEY SHALL BE A MINIMUM OF EIGHTY (80) FEET FROM THE INTERSECTION BACK OF CURB.

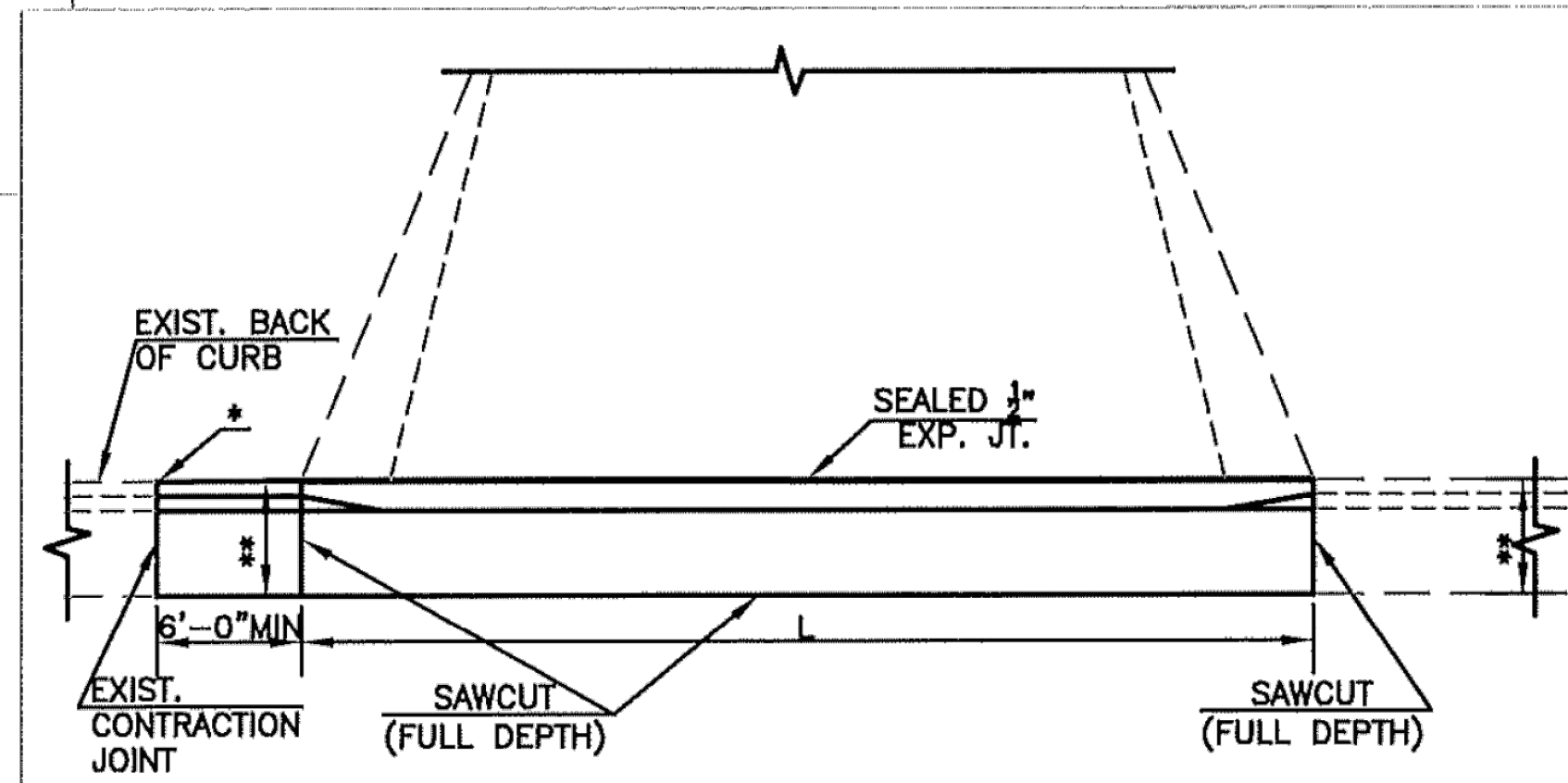
POSTAL BOX BANKS

NO.	DATE	REVISION	BY	APP'D
8	Oct. 2020	Updated cast iron monument box	JOT	BDF
7	Oct. 2017	Updated cast iron monument box	DHS	JPS
6	March 2013	Added grease to dowels & bar size to "	DHS	SB
5	Jan. 2013	Added Manhole Adjustment detail	DHS	SB
4	Jan. 2013	Removed Brick S/W & Stone Curb details	DHS	SB
3	Dec. 2012	Changed to tie bar from dowel	DHS	SB
2	Dec. 2009	Dowel size & # pvm range and curb det.	DHS	SB

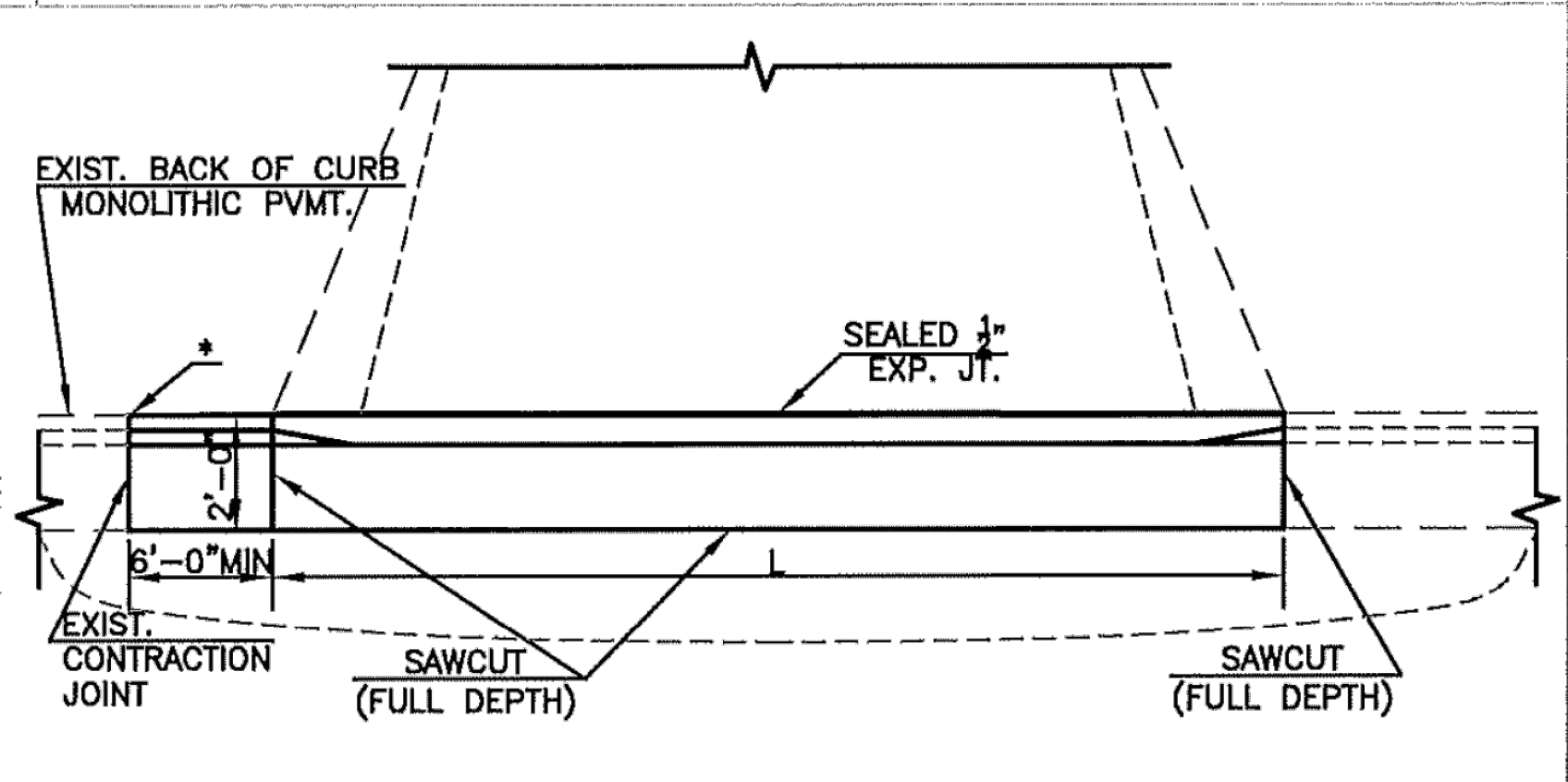


NOTES:
 1. ALL MATERIAL AND METHODS SHALL BE IN ACCORDANCE WITH CITY OF TOPEKA STANDARD TECHNICAL SPECIFICATIONS, LATEST EDITION.
 2. DOWEL HOLE SIZE = O.D. OF DOWEL + 1/8"
 3. EPOXY GROUTING PER SEC. 830, KDOT STANDARD SPECIFICATIONS FOR STATE ROAD & BRIDGE CONSTRUCTION, LATEST EDITION.

FULL PANEL REPAIR & UTILITY CUTS FOR CONCRETE PAVEMENT



PAVEMENT WITH CURB & GUTTER

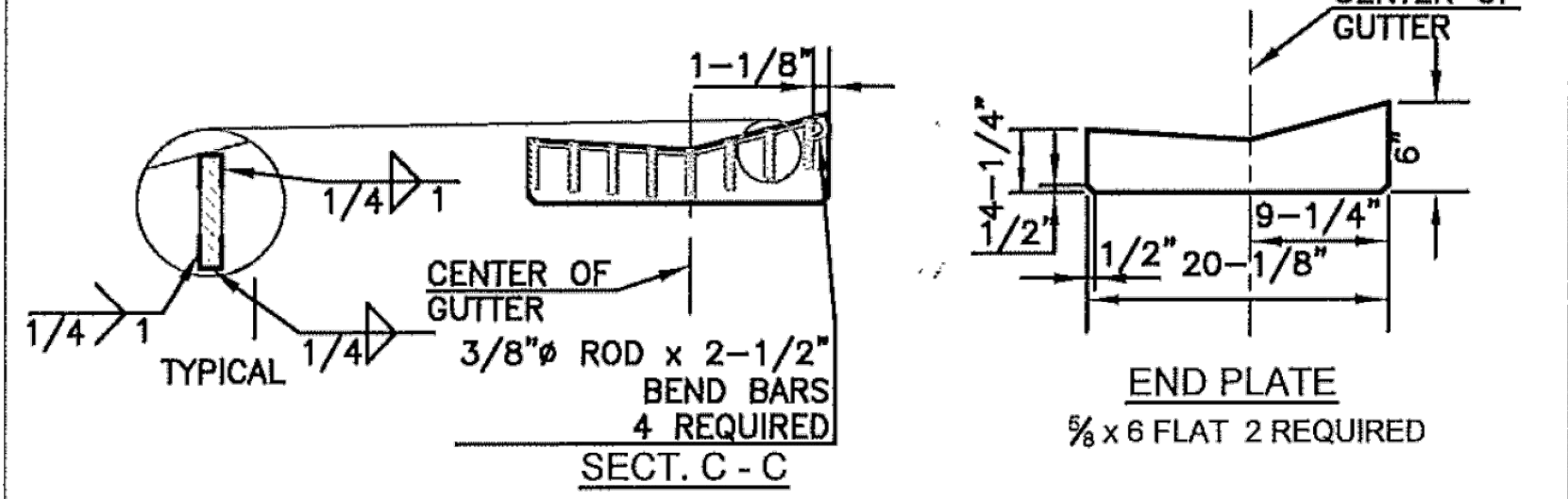
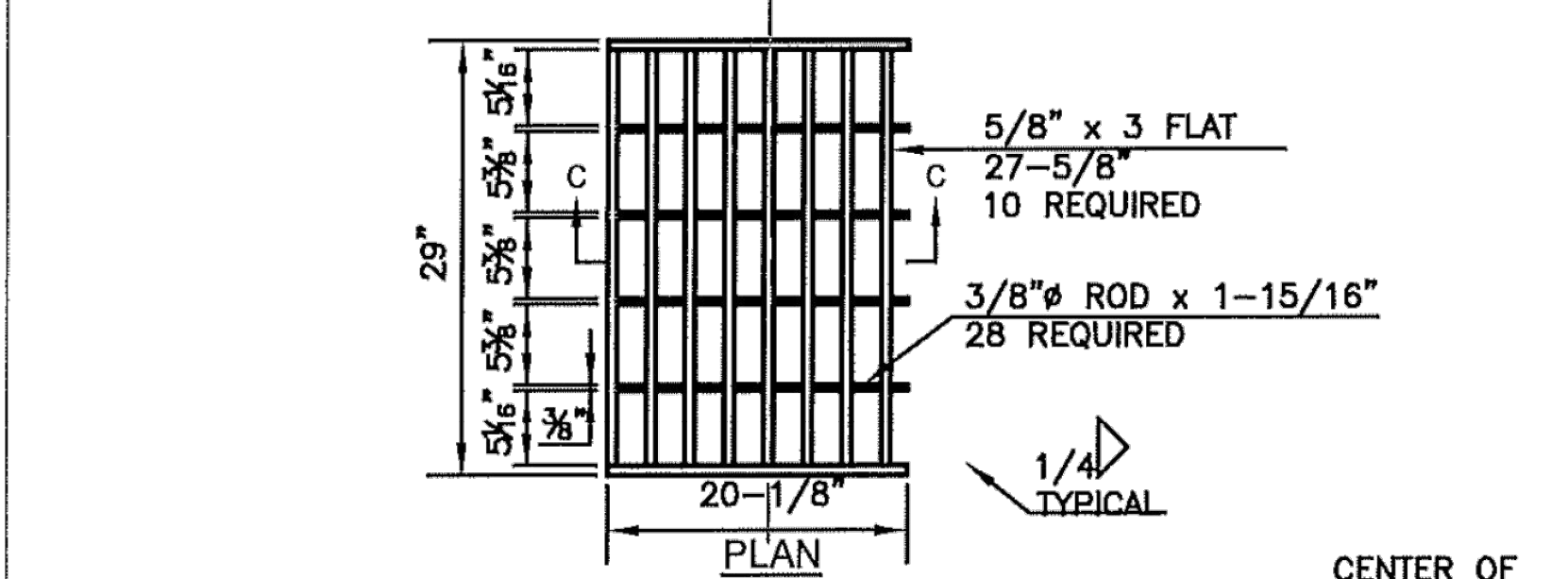
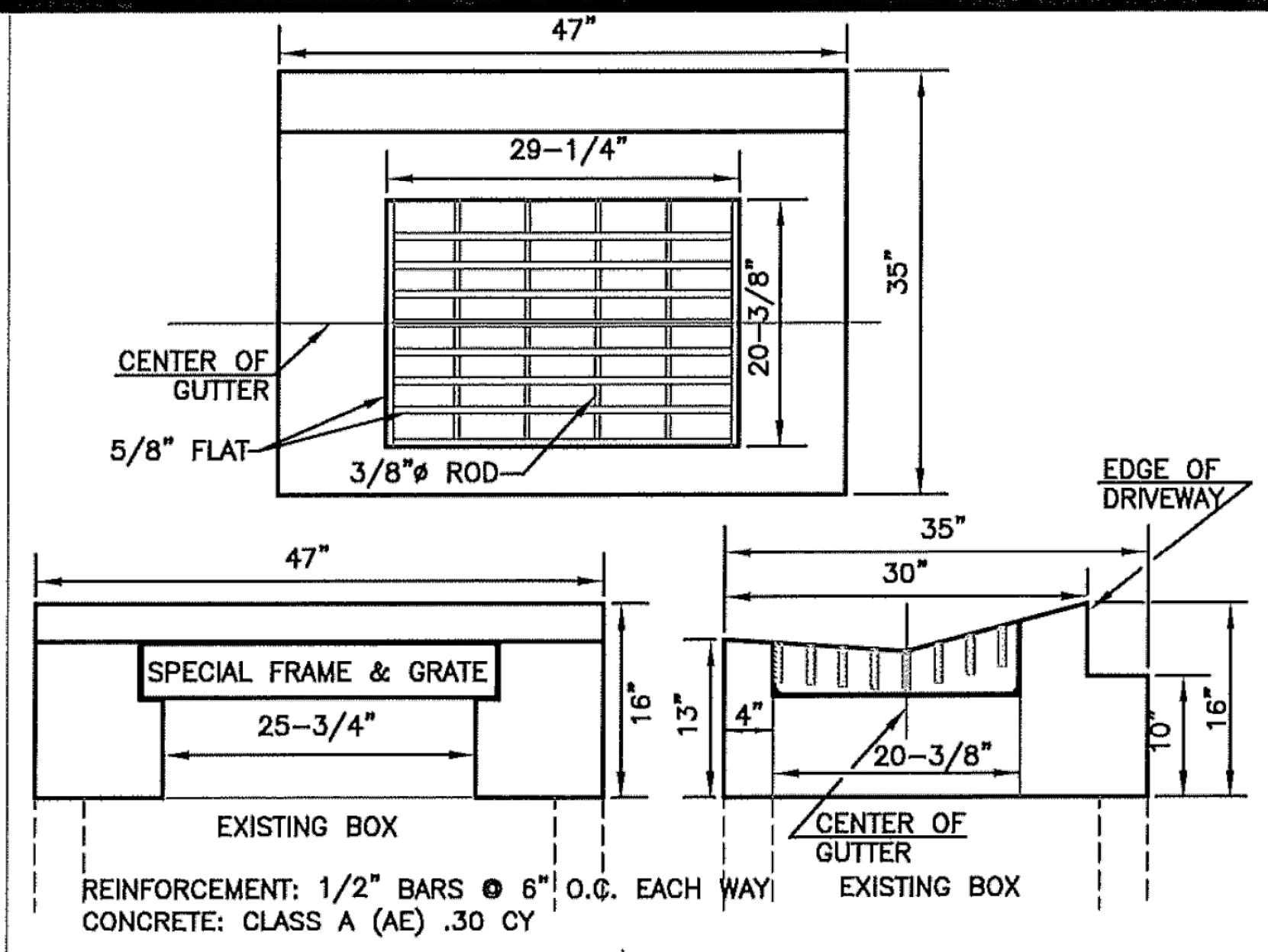


MONOLITHIC CONCRETE PAVEMENT WITH INTEGRAL CURB

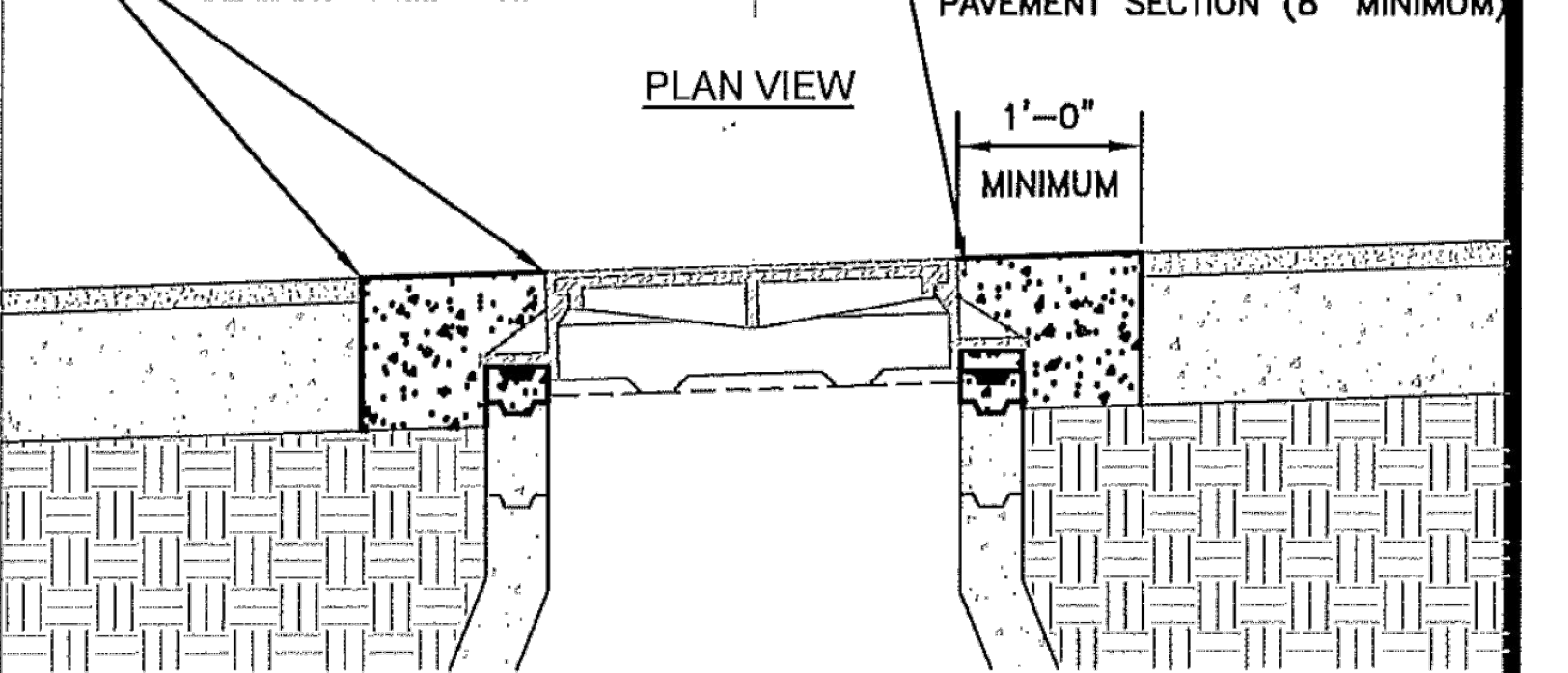
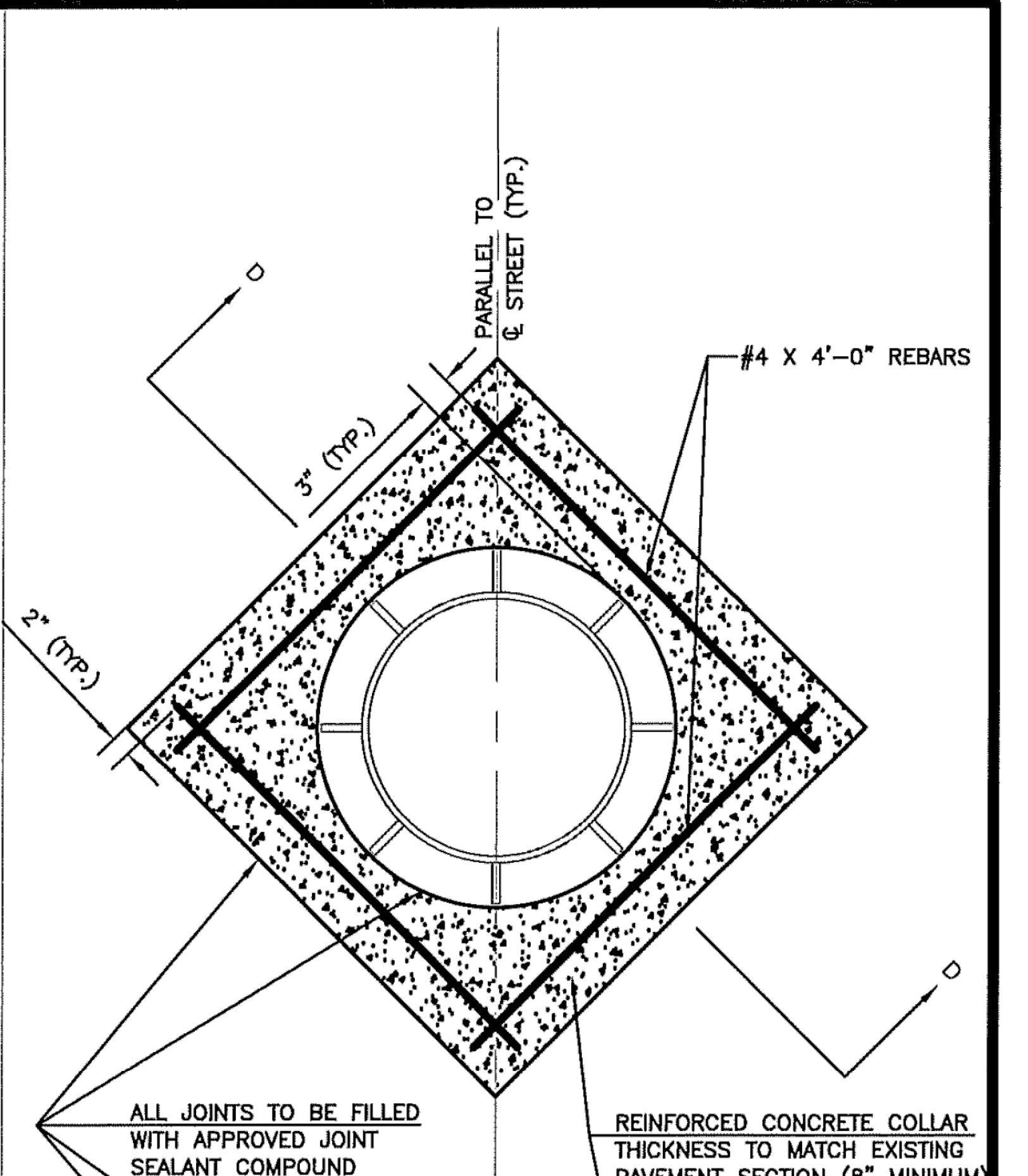
* IF CURB AND GUTTER TO BE REMOVED IS WITHIN 6'-0" OF AN EXISTING JOINT, REMOVE CURB AND GUTTER BACK TO EXISTING JOINT.
 L - PER CITY STANDARD DESIGN CRITERIA.

** MATCH EXISTING CURB WIDTH.

CURB CUT/REMOVAL FOR NEW RESIDENTIAL DRIVE APPROACH



SPECIAL II-P GRATE TOP



NOTES:
 1. PAVEMENT SHALL BE REMOVED BY FULL DEPTH SAW CUTTING WHILE PROTECTING NEW PAVEMENT.
 2. THE ORIENTATION OF THE REINFORCED CONCRETE COLLAR SHALL BE AS SHOWN OR FIELD DETERMINED BY ENGINEER.
 3. ADJUST MANHOLE RING TO MATCH PAVEMENT CROSS SLOPE USING APPROVED CONCRETE MANHOLE GRADE ADJUSTMENT RINGS AND CONCRETE BLOCKS OR APPROVED HIGH-DENSITY POLYETHYLENE MANHOLE ADJUSTMENT RINGS.
 4. SET MANHOLE RING WITH 2 RINGS OF 3/4" PREFORMED MASTIC SEALANT.
 5. ALL TIME AND MATERIAL NECESSARY TO PERFORM THIS WORK SHALL BE CONSIDERED SUBSIDIARY TO THE BID ITEM "MANHOLE ADJUSTMENT".

MANHOLE ADJUSTMENT

DRAWN BY: *il/m*
 APP'D BY: *SD*



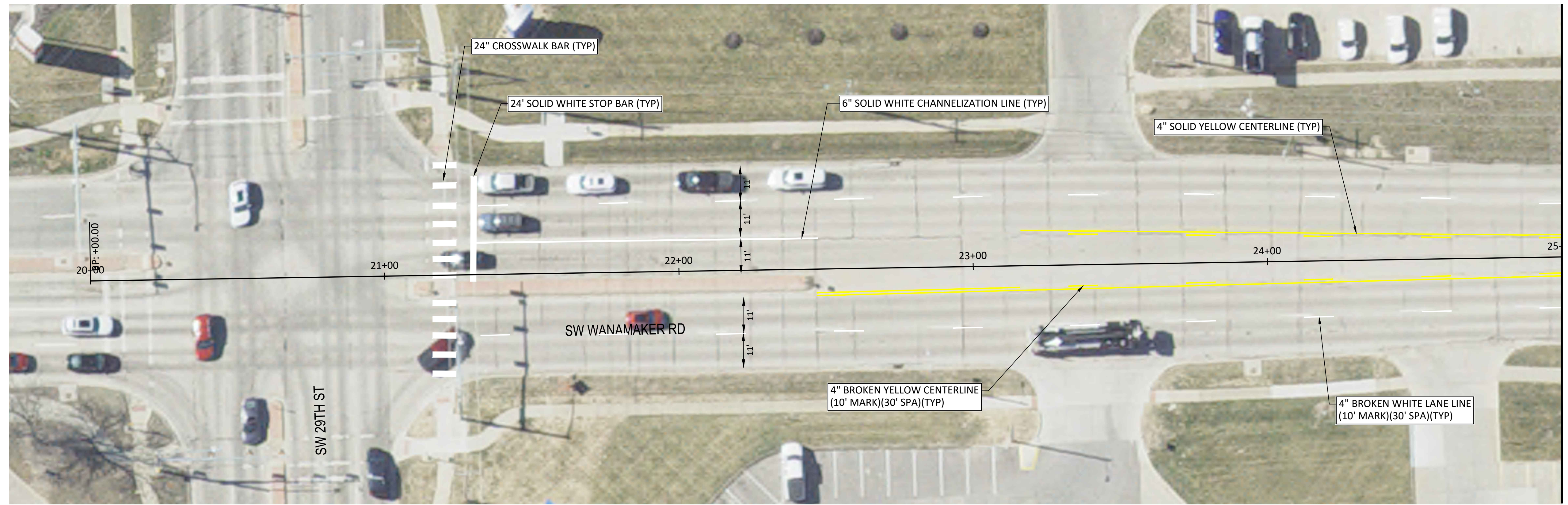
SHAWNEE COUNTY, KANSAS
PUBLIC WORKS DEPARTMENT
 1515 NW SALINE
 TOPEKA, KS 66616
 (785) 233-7702



STANDARD DETAILS

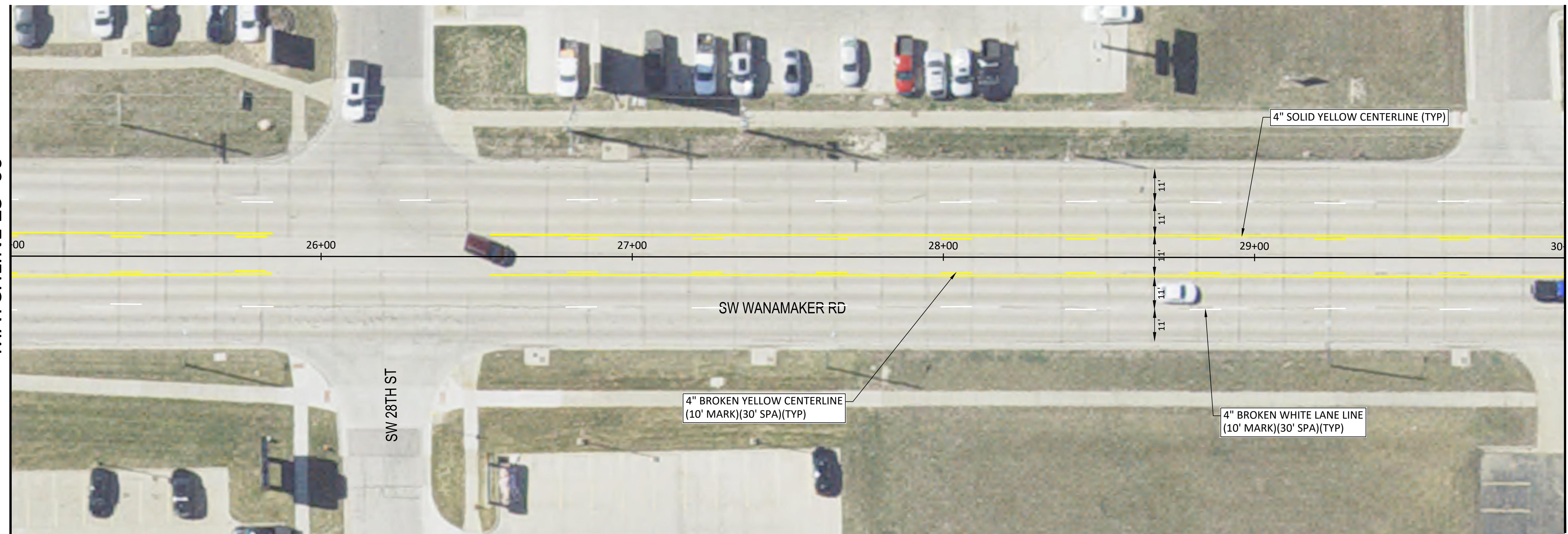
MISCELLANEOUS DETAILS I
 (DT-017)

DATE: FEB 2026
 SHEET: 21 OF 44
 PROJ.: 841106.02



SW WANAMAKER RD PAVEMENT MARKING PLAN
Scale: 1" = 20' (Full Size)

MATCHLINE 25+00



SW WANAMAKER RD PAVEMENT MARKING PLAN
Scale: 1" = 20' (Full Size)

MATCHLINE 25+00

MATCHLINE 30+00

File Location: Y:\Kansas\1326-605\1326-600002-00_Topeka_UBAS_26\Eng_Docs\General\Sheets\1326-600002_PRRK PLAN (SW WANAMAKER) 21ST TO 29TH.dwg | Plot Date: 2/23/2026 10:56:15 AM | Last Saved: 2/17/2026 3:02:00 PM: [renter]

NO.	DATE:	REVISION	BY:	APPD

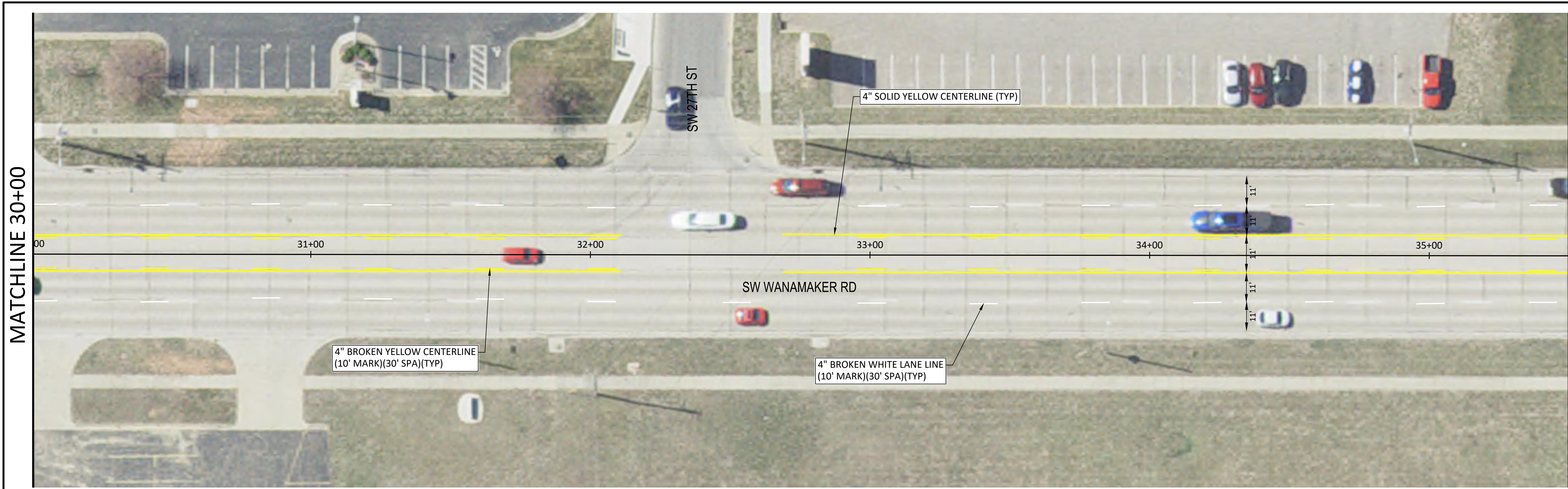
DRAWN BY: _____
APPD BY: _____

UBAS 2026
PROJECT 841106.02

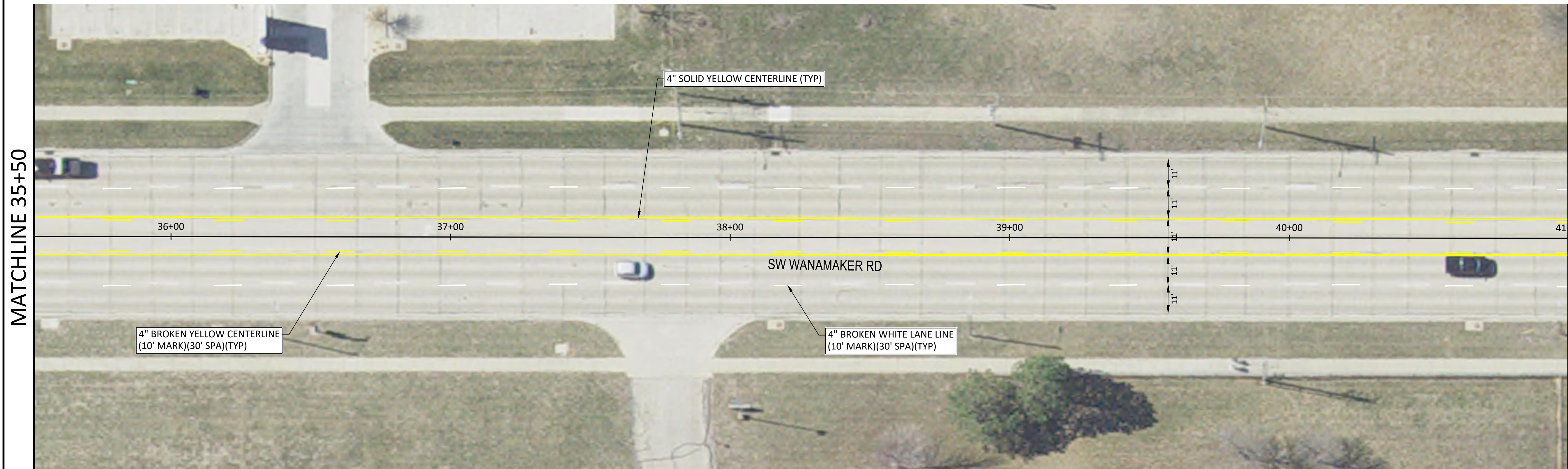
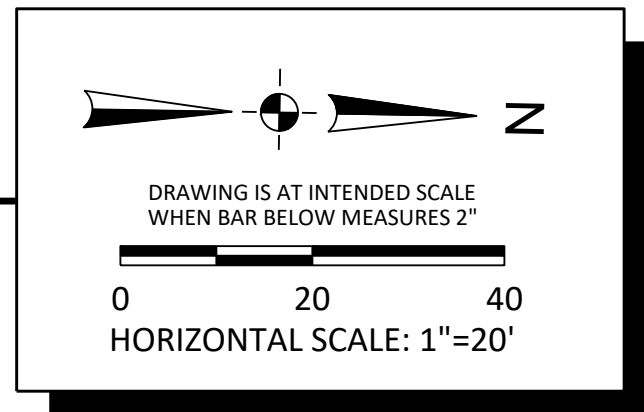
SW WANAMAKER RD PAVEMENT MARKING PLAN

DATE: FEB 2026
SHEET: 22 OF 44
PROJ.: 841106.02

File Location: Y:\Kansas\1326\605\1326-600002-00_Topeka_UBAS_26\Eng_Docs\General\Sheets\1326-600002_PRRK_Plan (SW WANAMAKER) 21ST TO 29TH.dwg [Plot Date: 2/23/2026 10:56:19 AM] [Last Saved: 2/17/2026 3:02:00 PM: #renter]



SW WANAMAKER RD PAVEMENT MARKING PLAN
 Scale: 1" = 20' (Full Size)



SW WANAMAKER RD PAVEMENT MARKING PLAN
 Scale: 1" = 20' (Full Size)

NO.	DATE:	REVISION	BY:	APPD

DRAWN BY: _____
 APPD BY: _____


 Alfred Benesch & Company
 123 SE 6th, Suite 200
 Topeka, Kansas 66603
 Ph 785.409.6507 Job No. - 131057.00

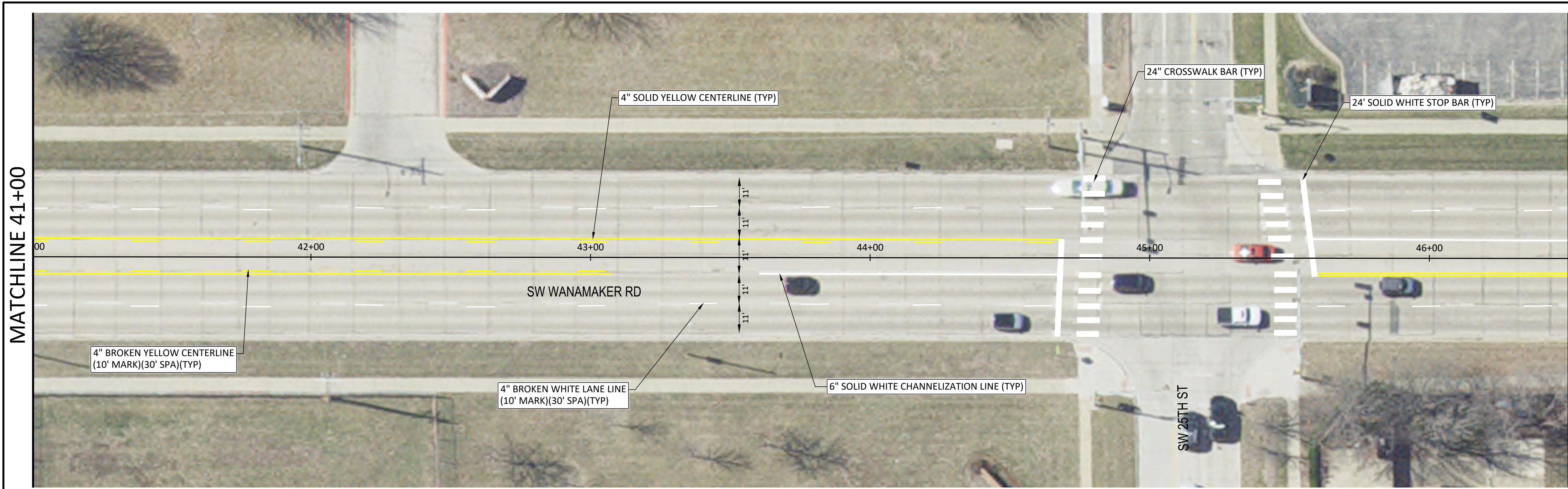

 620 SE MADISON St. • 2nd Floor • TOPEKA, KS 66607
 Phone: (785) 368-3842 • Fax: (785) 368-3881

UBAS 2026
 PROJECT 841106.02

SW WANAMAKER RD PAVEMENT MARKING PLAN

DATE: FEB 2026
 SHEET: 23 OF 44
 PROJ.: 841106.02

File Location: Y:\Kansas\1326-600\1326-600002-00_Topeka_UBAS_26_Eng_Docs\General\Sheets\1326-600002-00_PRRK PLAN (SW WANAMAKER) 21ST TO 29TH.dwg [Plot Date: 2/23/2026 10:56:24 AM] [Last Saved: 2/17/2026 3:02:00 PM; #reiter]

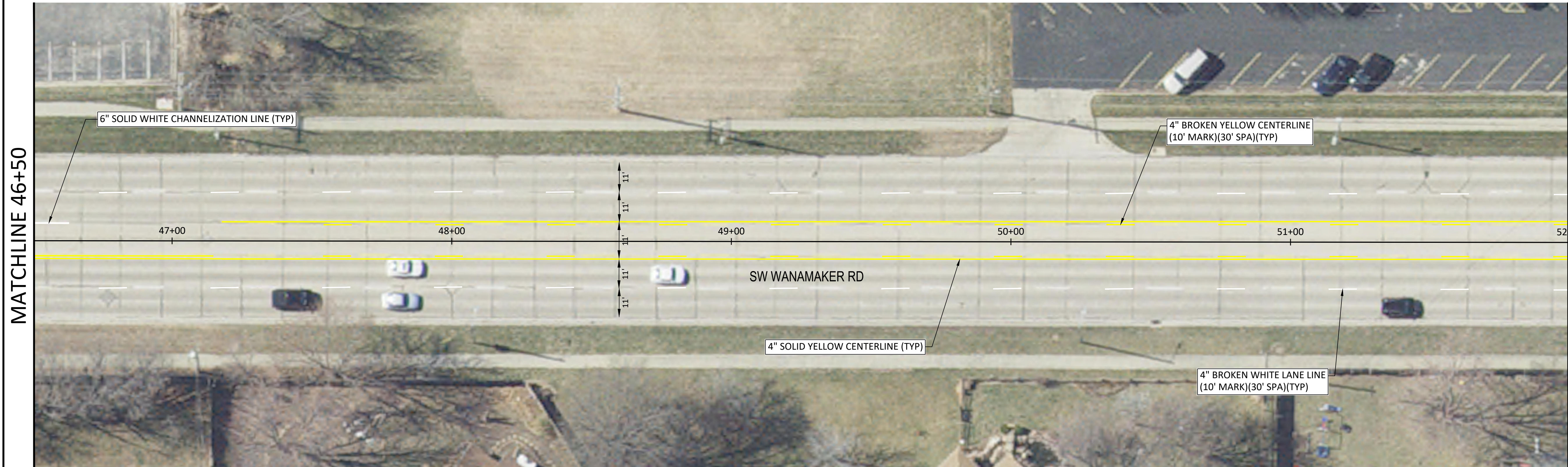


SW WANAMAKER RD PAVEMENT MARKING PLAN
 Scale: 1" = 20' (Full Size)

MATCHLINE 46+50

MATCHLINE 41+00

DRAWING IS AT INTENDED SCALE
 WHEN BAR BELOW MEASURES 2"
 0 20 40
 HORIZONTAL SCALE: 1"=20'



SW WANAMAKER RD PAVEMENT MARKING PLAN
 Scale: 1" = 20' (Full Size)

MATCHLINE 52+00

MATCHLINE 46+50

NO.	DATE:	REVISION	BY:	APPD

DRAWN BY: _____
 APPD BY: _____

Alfred Benesch & Company
 123 SE 6th, Suite 200
 Topeka, Kansas 66603
 Ph 785.409.6507 Job No. - 131057.00

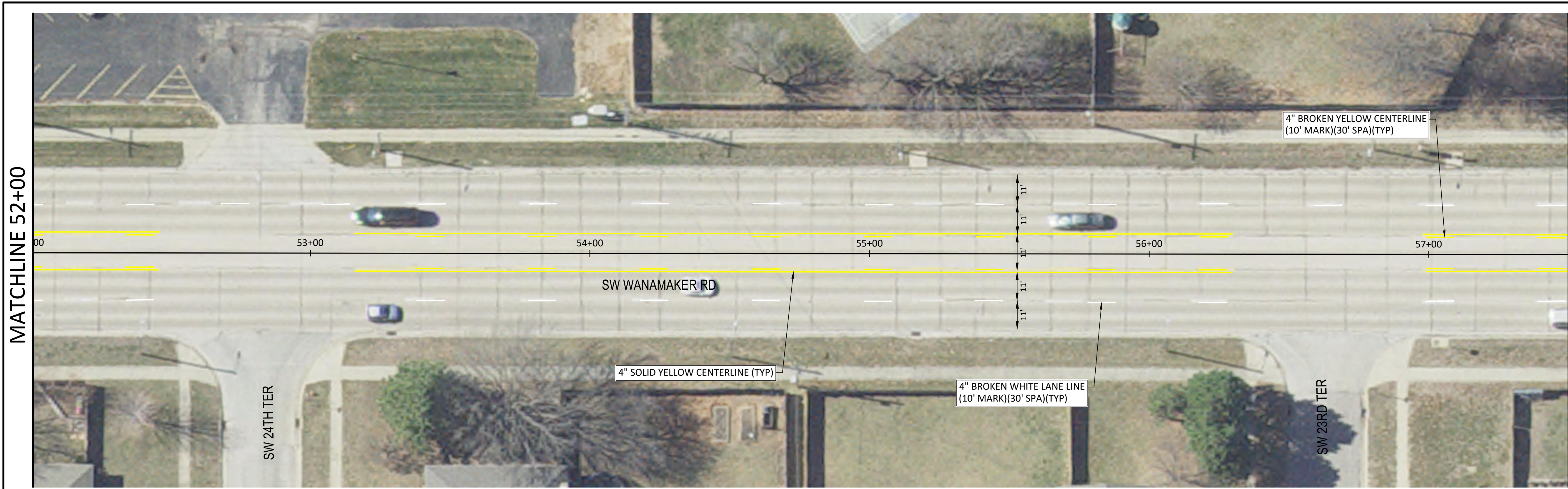
620 SE MADISON St. • 2nd Floor • TOPEKA, KS 66607
 Phone: (785) 368-3842 • Fax: (785) 368-3881

UBAS 2026
 PROJECT 841106.02

**SW WANAMAKER RD PAVEMENT
 MARKING PLAN**

DATE: FEB 2026
 SHEET: 24 OF 44
 PROJ.: 841106.02

File Location: Y:\Kansas\1326-6002-00_Topeka_UBAS_26\Eng_Docs\General\Sheets\1326-600002_PRRK PLAN (SW WANAMAKER) 21ST TO 29TH.dwg | Plot Date: 2/23/2026 10:56:29 AM | Last Saved: 2/17/2026 3:02:00 PM: jremier



SW WANAMAKER RD PAVEMENT MARKING PLAN
 Scale: 1" = 20' (Full Size)



SW WANAMAKER RD PAVEMENT MARKING PLAN
 Scale: 1" = 20' (Full Size)

DRAWING IS AT INTENDED SCALE
 WHEN BAR BELOW MEASURES 2"

 HORIZONTAL SCALE: 1"=20'

NO.	DATE:	REVISION	BY:	APPD

DRAWN BY: _____
 APP'D BY: _____

Alfred Benesch & Company
 123 SE 6th, Suite 200
 Topeka, Kansas 66603
 Ph 785.409.6507 Job No. - 131057.00

620 SE MADISON St. • 2nd Floor • TOPEKA, KS 66607
 Phone: (785) 368-3842 • Fax: (785) 368-3881

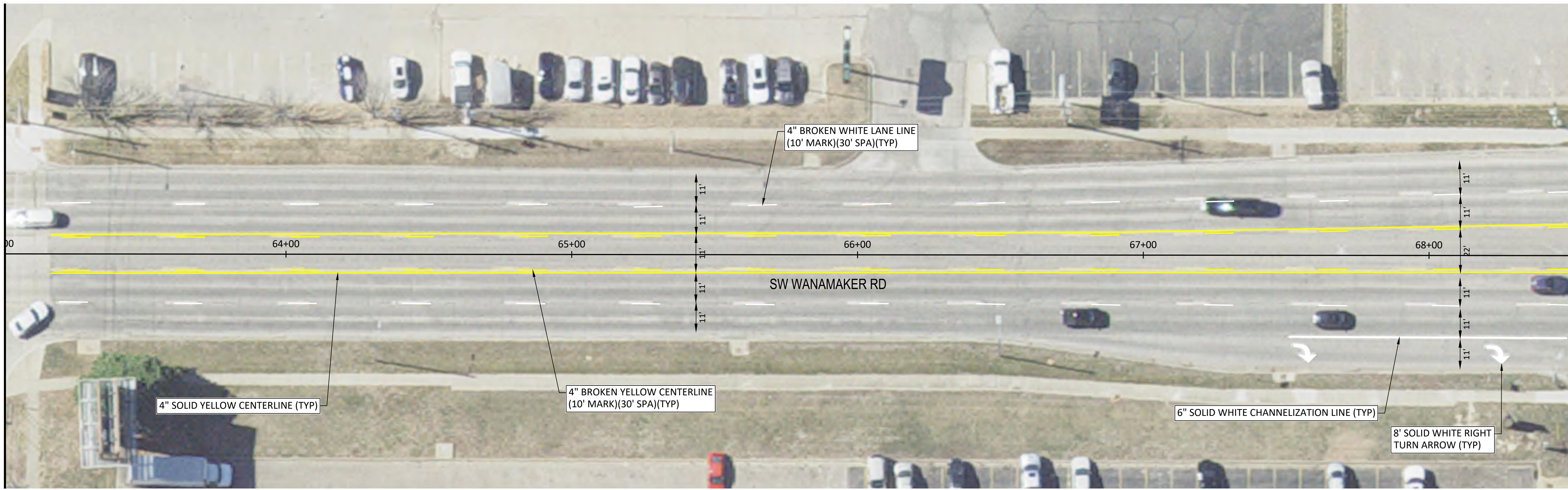
UBAS 2026
 PROJECT 841106.02

**SW WANAMAKER RD PAVEMENT
 MARKING PLAN**

DATE: FEB 2026
 SHEET: 25 OF 44
 PROJ.: 841106.02

File Location: Y:\Kansas\1326-60002-00_Topeka_UBAS_26\Eng_Docs\General\Sheets\1326-60002-00_PARK PLAN (SW WANAMAKER) 21ST TO 29TH.dwg | Plot Date: 2/23/2026 10:56:35 AM | Last Saved: 2/17/2026 3:02:00 PM - [rentier]

MATCHLINE 63+00

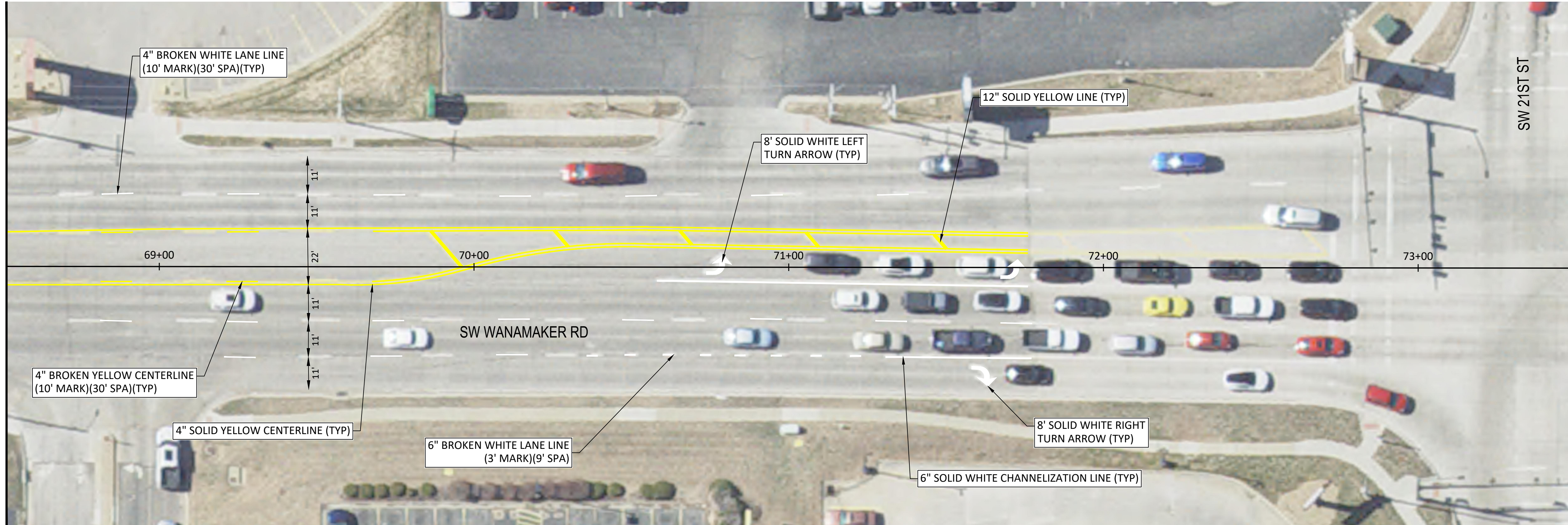


MATCHLINE 68+50

SW WANAMAKER RD PAVEMENT MARKING PLAN
 Scale: 1" = 20' (Full Size)

DRAWING IS AT INTENDED SCALE
 WHEN BAR BELOW MEASURES 2"
 0 20 40
 HORIZONTAL SCALE: 1"=20'

MATCHLINE 68+50



SW WANAMAKER RD PAVEMENT MARKING PLAN
 Scale: 1" = 20' (Full Size)

NO.	DATE:	REVISION	BY:	APPD

DRAWN BY: _____
 APPD BY: _____

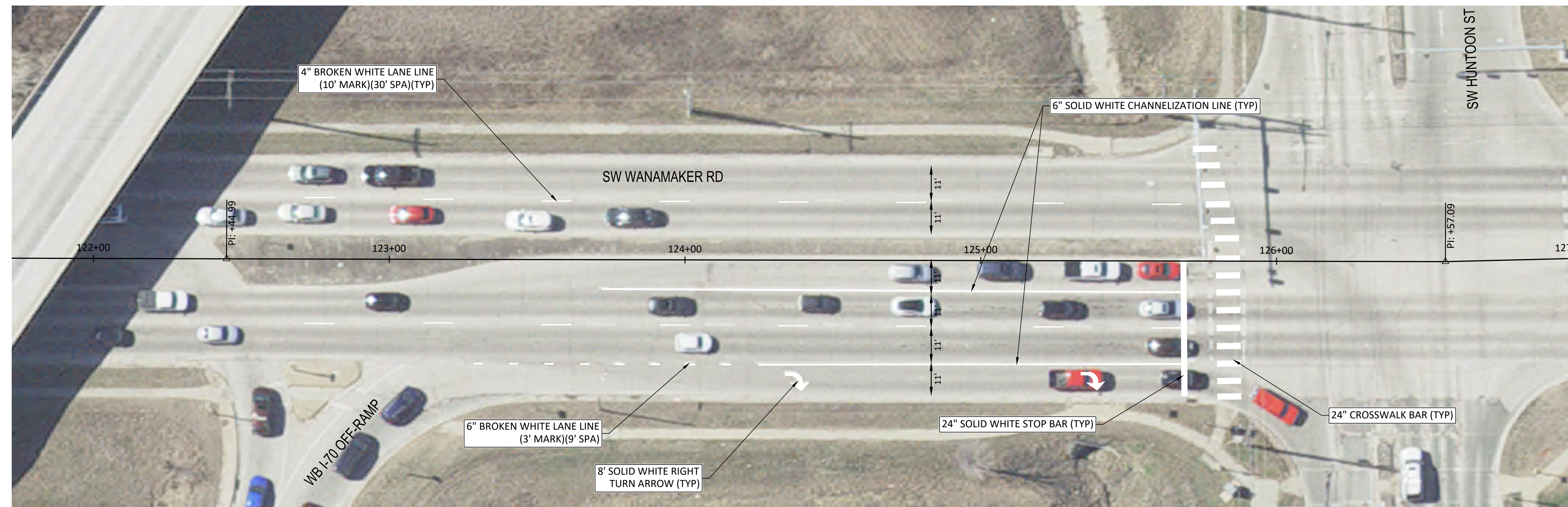
Alfred Benesch & Company
 123 SE 6th, Suite 200
 Topeka, Kansas 66603
 Ph 785.409.6507 Job No. - 131057.00

620 SE MADISON St. • 2nd Floor • TOPEKA, KS 66607
 Phone: (785) 368-3842 • Fax: (785) 368-3881

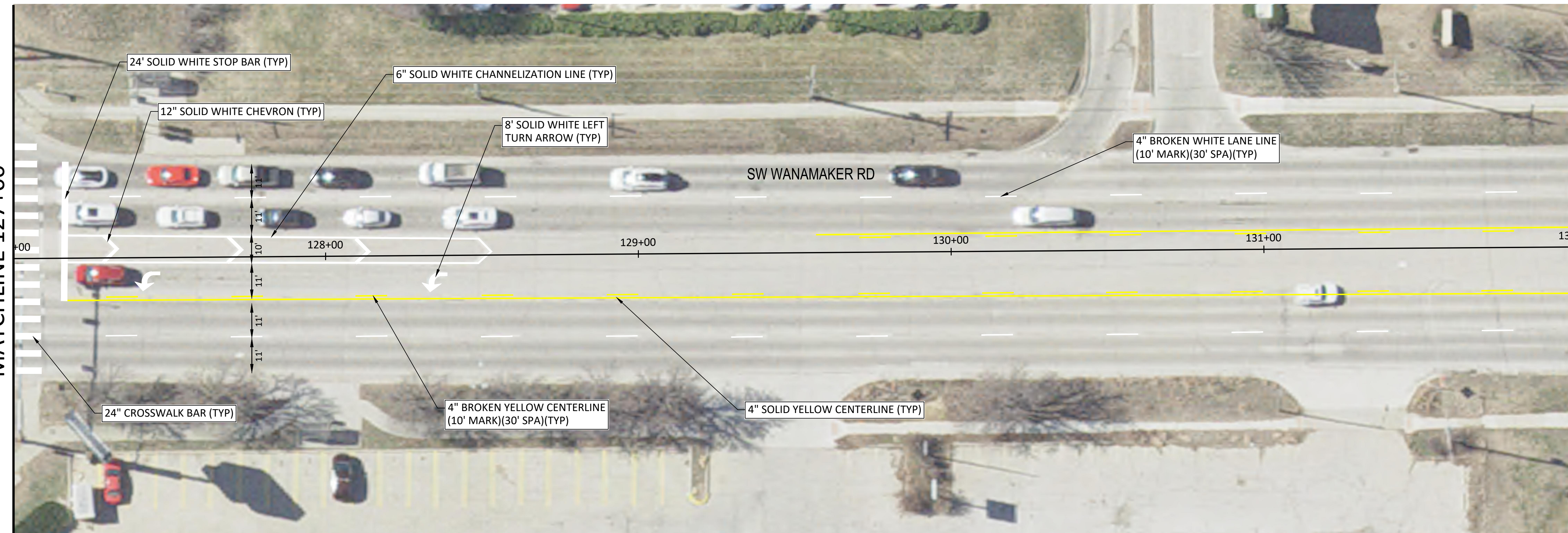
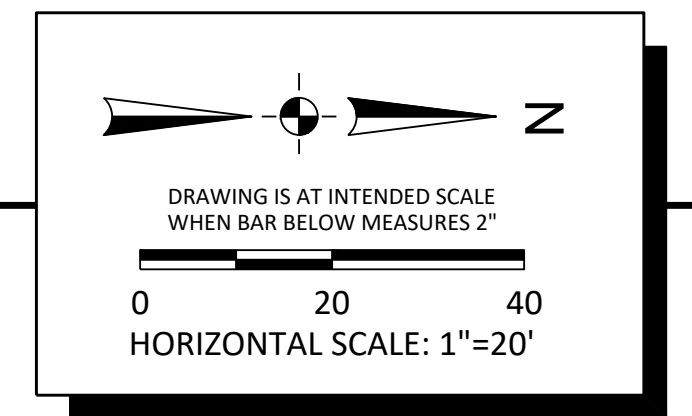
UBAS 2026
 PROJECT 841106.02

**SW WANAMAKER RD PAVEMENT
 MARKING PLAN**

DATE: FEB 2026
 SHEET: 26 OF 44
 PROJ.: 841106.02



SW WANAMAKER RD PAVEMENT MARKING PLAN
Scale: 1" = 20' (Full Size)



SW WANAMAKER RD PAVEMENT MARKING PLAN
Scale: 1" = 20' (Full Size)

File Location: Y:\Kansas\1326\605\1326-600002-00_Topeka_UBAS_26\Eng_Docs\General\Sheets\1326-600002_PARK PLAN (SW WANAMAKER).dgn [Plot Date: 2/24/2026 9:51:09 AM] [Last Saved: 2/23/2026 11:15:40 AM; .rvt]

NO.	DATE:	REVISION	BY:	APPD

DRAWN BY: _____
APPD BY: _____

benesch
Alfred Benesch & Company
123 SE 6th, Suite 200
Topeka, Kansas 66603
Ph 785.409.6507 Job No. - 131057.00

TOPEKA
Public Works
ENGINEERING
620 SE MADISON St. • 2nd Floor • TOPEKA, KS 66607
Phone: (785) 368-3842 • Fax: (785) 368-3881

UBAS 2026
PROJECT 841106.02

SW WANAMAKER RD PAVEMENT
MARKING PLAN

DATE: FEB 2026
SHEET: 27 OF 44
PROJ.: 841106.02